

AxCIS MONO

Contact Image Sensor



KEY FEATURES

- High speed 120 kHz, and high resolution 900 dpi
- No missing or interpolated pixels
- Exposure control
- Mono/HDR mode
- Precalibrated pixel size for metrology applications
- Next gen Camera Link HS fibre interface

PROGRAMMABILITY

- Automatic image alignment with a seamless image output
- Subpixel spatial correction
- 8 or 12 bit output
- Flat field correction
- Programmable coefficient sets

TYPICAL APPLICATIONS

- Battery inspection
- Print inspection
- Printed circuit boards
- Web inspection
- General purpose machine vision

High Performance Contact Image Sensor

Based on Teledyne DALSA's industry leading CMOS linescan sensors, the new AxCIS modules offers highly integrated vision solutions at lower system costs for many demanding applications in machine vision. It combines sensors, lenses, and light sources in a compact design with ease of use. AxCIS comes with the next-generation CLHS fibre interface, delivering high data throughput, high reliability, and long cable distance over standard fibre optic cables.

SPECIFICATIONS

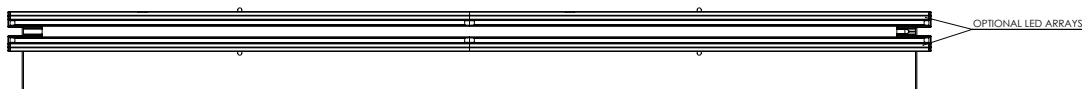
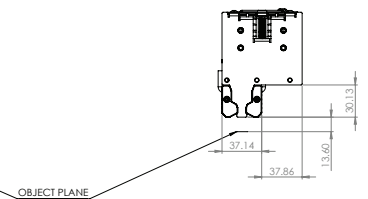
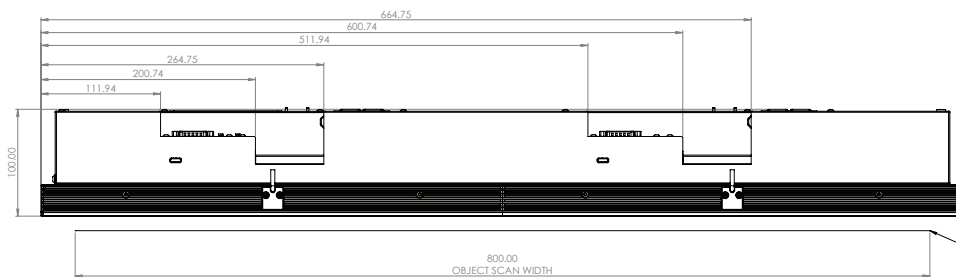
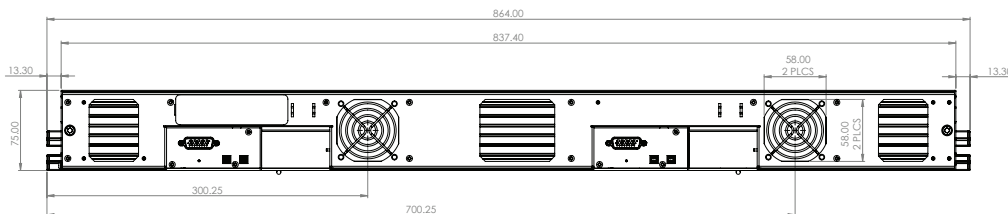
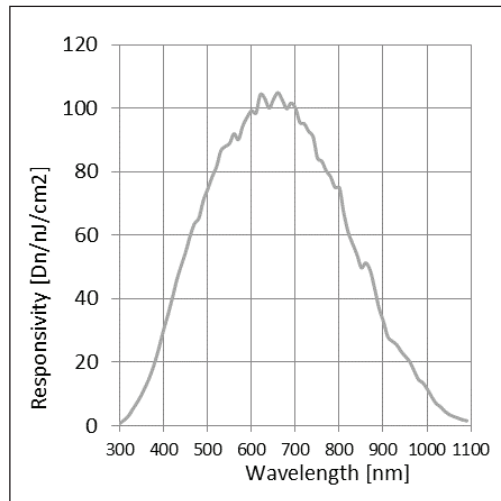
Field of view	400/800 mm
Depth of field	0.6 mm
Working distance	13.6 mm
Resolution	56/28 μ m (450/900 dpi) selectable
Max line rate	120/60 kHz (mono/HDR)
Output	Mono/HDR
Bit depth	8 or 12 bit selectable
Responsivity	See graph
Light source	White LED (optional)
Dynamic Range	>76 dB
Nominal Gain Range	1x to 10x
Size	437.4 (L) x75 (W) x100 (H) mm (400 mm) 837.4 (L) x75 (W) x100 (H) mm (800 mm)
Mass	TBD
Operating Temp	0 to +50 °C (case)
Power Supply	+24 VDC
Power Dissipation	<70 W (400 mm) <140W (800 mm)
Data & Control	Camera Link HS SFP+
GPIO	RS422
Regulatory Compliance	CE, FCC, and RoHS

AxCIS MONO MODEL

Part Number	FOV	Max. Line Rate	Pixel Size/dpi	Output
AX-FM-04B12H-00	400 mm	120/60 kHz	56/28 μ m 450/900 dpi	Mono/HDR
AX-FM-08B12H-00	800 mm	120/60 kHz	56/28 μ m 450/900 dpi	Mono/HDR

PRELIMINARY PRODUCT INFORMATION

SPECIFICATIONS



FOR MORE INFORMATION CONTACT:

AMERICAS Boston, USA | +1 978-670-2000 | TDI_sales.americas@teledynedalsa.com
 EUROPE Munich, Germany | +49 89-89-54-57-3-80 | TDI_sales.europe@teledynedalsa.com
 ASIA PACIFIC Tokyo, Japan | +81 3-5960-6353 | TDI_sales.asia@teledynedalsa.com
 Shanghai, China | +86 21-3368-0027 | TDI_sales.asia@teledynedalsa.com

This document does not contain information whose export/transfer/disclosure is restricted by the Canadian Export Control regulation. Teledyne DALSA has its corporate offices in Waterloo, Canada. Teledyne DALSA reserves the right to make changes at any time without notice. 2022 © Teledyne DALSA.

Revision Number: 03-070-20171
Revision Date: 2022 08 24