

Teledyne DALSA Shad-o-Box HS

Detector User Manual



© 2021 Teledyne DALSA. All information provided in this manual is believed to be accurate and reliable. No responsibility is assumed by Teledyne DALSA for its use. Teledyne DALSA reserves the right to make changes to this information without notice. Reproduction of this manual in whole or in part, by any means, is prohibited without prior permission having been obtained from Teledyne DALSA.

About Teledyne DALSA

Teledyne DALSA is an international high performance semiconductor and electronics company that designs, develops, manufactures, and markets digital imaging products and solutions, in addition to providing semiconductor products and services. Teledyne DALSA's core competencies are in specialized integrated circuit and electronics technology, software, and highly engineered semiconductor wafer processing. Products and services include image sensor components; electronic digital cameras; X-ray detectors; vision processors; image processing software; and semiconductor wafer foundry services for use in MEMS, high-voltage semiconductors, image sensors and mixed-signal CMOS circuits.

Contact Information

Please feel free to contact the Teledyne DALSA sales office nearest you to place an order, obtain more detailed information or in case you encounter any problem operating the detector:

Americas

765 Sycamore Drive
Milpitas, CA 95035
USA
Tel: +1 408-736-6000
Fax: +1 408-736-6001

Europe

High Tech Campus 27 (M/S 14)
5656 AE Eindhoven
The Netherlands
Tel: +31 40 2599000
Fax: +31 40 2599005

Asia Pacific

Ikebukuro East 13F
3-4-3 Higashi Ikebukuro
Toshima-ku, Tokyo
Japan
Tel: +81 3-5960-6353
Fax: +81 3-5960-6354

E-mail: sales.rad-icon@teledyne.com

Website: <http://www.teledynedalsa.com/ndt>

Table of Contents

1. <i>Safety Information</i>	5
Installation Warning	5
Safety Statement	5
No User Serviceable Components	5
Disposal of Product.....	5
<i>General safety instructions</i>	5
2. <i>EMC compliance</i>	6
Warning	6
3. <i>System precautions</i>	6
Warning:	6
Static precautions.....	6
Installation Precautions.....	6
Service by Qualified Personnel Only	6
<i>Regulatory Compliance</i>	7
4. <i>Detector Maintenance</i>	8
Protecting the Detector Front Cover	8
Cleaning the Detector Body and Front Cover.....	8
Periodic Maintenance	8
Calibration	8
<i>Recycling</i>	8
5. <i>Specifications</i>	9
6. <i>Connectors, Cables and Status Indicators</i>	10
7. <i>Setting up the Detector</i>	12
GigE Network Adapter	12
Connect Ethernet cable	12
Connect power cable.....	12
Status Light.....	12
Software Installation.....	12
8. <i>Software Installation and Setup</i>	13
Operating Systems Support	13
Obtain software.....	13
Sapera LT and CamExpert Installation	13
Optimizing Settings	14
Connecting.....	17
Checking detector status and information in Gigabit Ethernet	17
9. <i>Acquiring Images</i>	18
To snap an image:	21

To grab multiple images:	21
10. <i>Camera Information</i>	22
Camera Configuration Selection Dialog	24
Detector Control	25
Read-Out Mode	27
Trigger Mode	28
Image Format Control.....	32
Image Processing Control.....	33
Defect Maps.....	36
Firmware Update	43
GigE Vision Host control	44
11. <i>Mechanical Drawings</i>	46
Revision History	50

1. Safety Information

Installation Warning

The operators of this equipment are responsible for the safe and prudent installation of the detector in their own system. All X-ray sources and controls, shielding, personnel safety monitoring devices, and personnel safety precautions involved in the acquisition and display of data are the responsibility of the end user.

Safety Statement

The general safety precautions that follow must be observed during all phases of installation, operation, service and repair of this system. Failure to comply with these precautions, or with specific warnings noted in this manual, violates the safety standards of design, manufacture and the intended use of this system. Teledyne DALSA assumes no responsibility for the user's failure to comply with these requirements.



Warning: This digital camera system, when installed, is subject to exposure from X-rays during operation.

To ensure personnel safety, it is necessary that a radiation meter be used to check for radiation leakage after installation of the digital camera in the end users system.

Teledyne DALSA assumes no responsibility for the proper installation of X-ray shielding, X-ray shield enclosure testing, or safe and prudent operation of the camera system in the end user's installation. It is the end users responsibility to ensure that local and federal guidelines regarding the installation and operation of X-ray sources are followed.

For those parties supplying the power requirements to the Shad-o-Box HS, the voltage specifications must be strictly adhered to or the system will no longer be considered covered under warranty.

No User Serviceable Components

There are no components in this system which need to be replaced, modified, or adjusted by the end user. Please contact Teledyne DALSA Support for assistance if needed.



Safety Warning: Tampering with this product voids the warranty and may degrade the detectors image quality, resulting in a possibly unsafe condition.

The system has been designed to minimize the amount of interference it may generate in a typical installation. This equipment generates and can radiate radio frequency energy and, if not installed and operated in accordance with the instructions, may cause harmful interference to other devices in the area.

Disposal of Product

This detector does not contain batteries. Dispose of the unit in accordance with local regulatory guidelines.

General safety instructions

- Read and follow the instructions before using the detector to ensure safe and proper use.
- Wear an ESD wrist strap, ESD clothes, or ESD gloves when installing or maintaining the detector.
- Do not install if visible damages are observed on the detector. Inspect shipping containers for any signs of damage and contact Teledyne DALSA for assistance.

- Lack of calibration can result in a lower image quality. Periodical check is necessary to ensure that the detector meets the requirements of targeted application.

2. EMC compliance

To ensure EMC compliance, follow these specific guidelines:



- Ensure that all cable shields have a 360° electrical connection to the connector.
- Fasten and secure all connectors.

Warning



- The detector can influence the performance of very sensitive equipment.
- Strong EMC disturbances can influence the detector's performance.

3. System precautions

The following are precautions that must be taken in order to prevent possible damage to your Teledyne DALSA Detector system:

Warning:



The use of accessories, power supplies and cables other than those supplied or specified, with the exception of cables sold by Teledyne DALSA as replacement parts, may result in increased emission or decreased immunity of the Shad-o-Box HS Detector.



Static precautions

Observe proper ESD/static control procedures when handling system components. The use of properly grounded wrist strap is highly recommended.

Installation Precautions



Never connect or disconnect cables while power to the detector is on. Damage to the detector electronics will occur if the cables are connected and/or disconnected while the detectors power is on.

Service by Qualified Personnel Only



This equipment is to be installed by a qualified technician only. The system can only be used in conjunction with a properly installed X-ray source with the appropriate shielding and a properly configured computer workstation that meets the minimum system requirements discussed later in this manual.

Regulatory Compliance

The Shad-o-Box HS has been designed and manufactured in accordance with the applicable clauses of the international standards and legislations.

- EN 61000-6-3: Electromagnetic compatibility (EMC) – Generic standards. Emission standard for residential, commercial and light-industrial environments
- IEC/EN 61000-6-2: Electromagnetic compatibility (EMC) – Generic standards. Immunity standard for industrial environments
- EN 50581/EN IEC 63000: Technical documentations for the assessment of electrical and electronic products with respect to the restriction of hazardous substances

4. Detector Maintenance

Before performing any of the following operations, make sure that the power to the detector is switched OFF.

Protecting the Detector Front Cover

The imaging area is marked on the front cover of the detector and should be treated with extreme care, as scratches or debris in this area may produce artifacts in the X-ray image. If visible scratches are present, X-ray test images should be taken to ensure that the scratches do not adversely affect the image quality.

Cleaning the Detector Body and Front Cover

The detector body and front cover can be cleaned with a mild, non-abrasive cleanser such as isopropyl alcohol. Place a small amount of cleanser on a soft cloth and rub gently over the detector body surface. Wipe off with a clean soft cloth. Do not use any harsh cleansers or solvents that may damage the paint or other finishes on the detector. In the event of detector exposure to bio-hazardous materials, proper cleaning procedures should be undertaken prior to removal or maintenance of the detector.

Periodic Maintenance

No periodic maintenance or service is needed.

Calibration

To have the best image performance, the raw image data generated by the detector should be corrected at the host by using a flat field (offset and gain) correction. As the offset (dark) calibration signal depends (amongst others) on ambient temperature conditions of the detector, it is commonly accepted good practice to generate these calibration images frequently at times that the X-ray source is switched off. It is recommended to re-calibrate the gain correction image at least once per year, or whenever the X-ray tube is exchanged or anything changes in the X-ray imaging geometry (e.g. the distance between the X-ray source and the detector).

The detector can contain deviating pixels. To have the best possible image quality it is advised to perform a defect pixel correction in the host system. It is recommended to create a defect pixel calibration map at least once every year, or more frequently in case of heavy use.

Recycling

EU Waste Electrical and Electronic Equipment (WEEE) Directive



The European Union (EU) implemented the EU WEEE Directive 2012/19/EU requiring producers of electrical and electronic equipment (EEE) to manage and finance the collection, re-use and recycling of the products that producers placed on the EU market after 13 August 2005. The EU Commission adopted the Implementing Regulation (EU) 2019/290 establishing the format for registration and reporting of producers of EEE to the register. The goal of this directive is to minimize the volume of EEE waste disposal and to encourage re-use and recycling at the end of life.

The WEEE symbol on the product indicates that the product cannot be disposed of with other household or municipal waste. Teledyne DALSA has labeled its products with the WEEE symbol to alert the customers that products bearing this label should not be disposed of in the landfill.

5. Specifications

<i>Device</i>	<i>Pixels</i>	<i>Active Area</i>	<i>Resolution</i>	<i>Frame Rate</i>
Shad-o-Box 688 HS	1032 x 688	10.2 x 6.8 cm	99 μm	66 fps
Shad-o-Box 1548 HS	1032 x 1548	10.2 x 15.3 cm	99 μm	30 fps
Shad-o-Box 1280 HS	1280 x 1280	12.8 x 12.8 cm	99 μm	40 fps ⁽¹⁾
Shad-o-Box 6K HS	2304 x 2940	11.4 x 14.6 cm	49.5 μm	15 fps ⁽¹⁾
Shad-o-Box 3K HS	2304 x 1300	11.4 x 6.4 cm	49.5 μm	30 fps ⁽¹⁾
Shad-o-Box 2K HS	1152 x 2940	5.7 x 14.6 cm	49.5 μm	10 fps
Shad-o-Box 1K HS	1152 x 1300	5.7 x 6.4 cm	49.5 μm	30 fps

⁽¹⁾ Maximum framerate achieved by enabling Turbo Drive functionality.

<i>Detector Specifications</i>		<i>Units</i>
Typ. dark current (23°C) ⁽¹⁾ ⁽³⁾	12	ADU/s ⁽²⁾
Read noise (rms)	4-8	ADU
Typ. dynamic range	3000:1	
Digitization	14	bits
Image lag	< 0.1	%
Non-linearity (10..90%FS)	< 1.5	%
Output data rate	40	MHz

⁽¹⁾ dark current doubles approx. every 8°C

⁽²⁾ ADU = Analog-Digital Unit \equiv 1 LSB (Least Significant Bit)

<i>Camera Specifications</i>		<i>Units</i>
Typical supply voltage	12.0	Volts
Supply voltage range	11 to 13	Volts
Maximum supply current	1.0	Amps
Typical power dissipation	< 10	Watts
Data interface	GigE	
Trigger interface	TTL	

General Specifications		Units
Operating Temperature	10 to 40	°C
Storage Temperature	-10 to +55	°C
Humidity (non-condensing)	10 to 80	% R.H.
Weight ⁽³⁾	< 3.5	kg

⁽³⁾ depends on camera model

6. Connectors, Cables and Status Indicators

The Shad-o-Box HS detectors use the following connectors:

- An RJ-45 connector for Gigabit Ethernet signals, data signals

- o CAT6 Ethernet cable

- One 2-pin Lemo connector for power

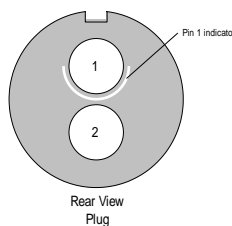
- o Lemo EGG.0B.0302

- o Mating connectors:

elbow type: FHG.0B.302.CLAD52Z

straight type: FGG.0B.302.CLAD52

Power Connector



pin	Description
1	Supply voltage (+12V/ 2A)
2	Ground

The power input is protected by a resettable fuse. If the fuse is activated, power cycle (off/on) the detector to reset.

- One 4-pin Lemo connector for triggering (**not for SB1k/2kHS**)

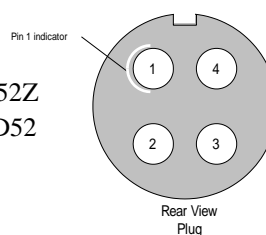
- o Lemo EGG.0B.0304

- o Mating connectors:

elbow type: FHG.0B.304.CLAD52Z

straight type: FGG.0B.304.CLAD52

I/O Connector

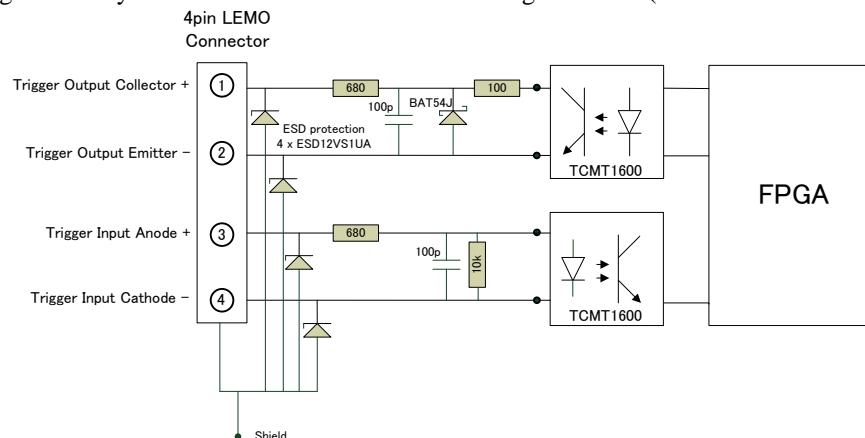


pin	Description
1	Trigger Output (+)
2	Trigger Output (-)
3	Trigger Input (+)
4	Trigger Input (-)

Optocoupler with 680Ω series resistor (max. rev. voltage 6V).

Trigger Connector

The trigger circuitry inside the detector is shown in the figure below (valid for both Lemo and FCI).



Ethernet Connection LED

Steady green indicates that an Ethernet connection is successfully established at 1Gbps.

Data Transmission LED

Steady yellow indicates that the detector is ready for data transmission. Flashing yellow indicates that the detector is transmitting or receiving data.

Detector Status LED

The detector is equipped with a color LED used to display the status of the detector's operation. The table below summarizes the operating states of the detector and the corresponding LED states.

Shad-o-Box HS

Color of Status LED		Meaning
1	Off	No power
2	Green	Detector is operational
3	Red	Power applied, Hibernate or Standby mode

7. Setting up the Detector

GigE Network Adapter

If the computer to be used with the detector does not have a Gigabit network adapter or second built in Gigabit NIC, a PCI bus Gigabit NIC needs to be installed. Typically under Windows 7/8/10 the PCI Gigabit NIC is recognized automatically when Windows boots. An example of a high performance NIC is the Intel Gigabit CT Desktop adapter.

Review the NIC documentation concerning any special driver required for Windows. Install the PCI bus Gigabit NIC as described by the NIC manufacture's documentation.

Connect Ethernet cable

Connect the Ethernet cable from the detector to the computer Ethernet jack. Secure the RJ-45 connector to the detector.

Connect power cable

Connect a power cable from the detector to a +12V power supply.

Status Light

Verify that the status light is solid green.

When the detector is connected to a host system it will be recognized in approximately 30 to 60 seconds.

Software Installation

Refer to the next chapter for instructions on installing and running the detector software.

8. Software Installation and Setup

Operating Systems Support

The current released GigE Vision framework supports up to Windows 10.

For Linux the Teledyne DALSA GigE Vision Application Programmers Interface (API) for Linux is available.

For additional support please contact our support team for the software and the latest status.

Obtain software

CD

Check the CD that shipped with your detector for installation files for CamExpert, the GigE driver and/or the ShadoCam software. To obtain the latest versions, or software for a newer operation system, it may be necessary to go to the Teledyne DALSA website for the latest updates.

Website

Visit the Teledyne DALSA website to download the latest free version of the Sopera LT SDK, including the CamExpert image viewer:

<http://www.teledynedalsa.com/imaging/products/software/sopera/lt/download/>

The download is free after filling out the on-line registration form. Make sure to select “Full SDK” as your download option.

Sopera LT and CamExpert Installation

A link to download the software will be emailed to you after submitting the application. Complete the download process and run the installation file (e.g. “SoperaLT80xSDKSetup.exe”).

CamExpert is an image viewer designed to evaluate your detector. The Sopera SDK is a set of development tools and documentation for creating your own software for interfacing to the product. Please download the appropriate materials and follow the instructions that are part of that download.

The Sopera SDK installation also contains a large number of helpful example projects to help you get started with integration the detector into your own application software.

GigE Vision framework for Sopera LT installation

The GigE Vision framework installs the GigE Vision Module for Sopera and includes the Network Imaging package which is required to access a GigE Vision detector.

Refer to the “GigE Vision Module for Sopera” user manual and “Network Imaging Module for Sopera LT” user manual which are included in the installation.

Optimizing Settings

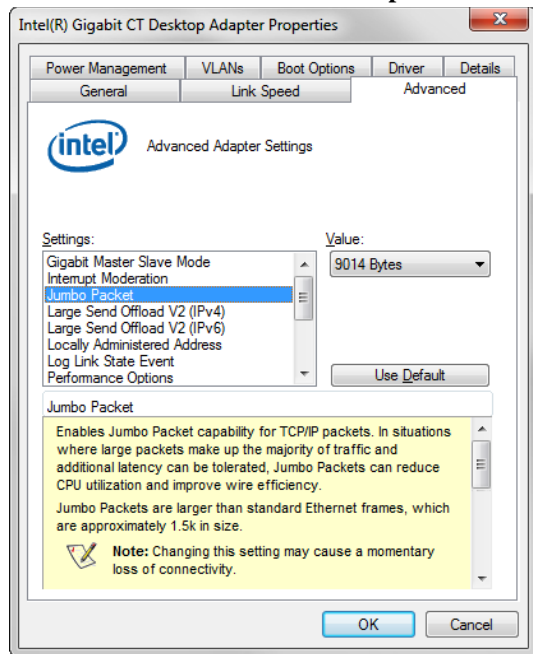
The performance of the gigabit Ethernet connection on the host computer generally can be improved by adjusting some settings in the NIC. The below advices refer to the Intel Gigabit CT desktop adaptor. For a more detailed explanation please refer to “Network Optimization Guide (PDF)” and “Network Imaging User’s Manual (PDF)” which is part of the Sapera LT software package.

To reduce the interrupt overhead in the host the following settings in the NIC are advised.

Packet Size

For a good Gigabit Ethernet connection with minimal packet resend conditions, host computer performance can generally be improved by increasing the data packet size. Each streaming video packet causes an interrupt in the host computer. Therefore increasing the packet size reduces the CPU overhead required to handle video data from the GigE Vision detectors.

A standard packet can have a size up to 1500 bytes. Many network cards support a jumbo packet mode that can extend that size up to 16Kbytes. In theory, a packet could be as large as 16 KB, but the CRC (cycle redundancy check) containing the checksum of each packet is not as efficient when the packet size grows larger than 9000 bytes. For this reason **we advise to set the packet size to 9014 bytes** (jumbo packet enabled).



Some system and network card configurations may have difficulty streaming and handling jumbo packet data. If the system is having issues than it is advisable to disable the Jumbo Packet setting, and use standard size packets of 1500 bytes for your application.

Interrupt Moderation

Normally, each time a packet is received by the network card, the associated driver will receive an interrupt. Obviously, when the packet rate is very high (that is, at high transfer rate which is common for GigE Vision systems), this represents significant overhead. Most network cards have introduced an interrupt moderation mode where the card waits to have received a certain number of packets over a maximum period of time before issuing the interrupt. This helps reduce the burden on the CPU as it can process multiple packets during the same interruption. The Intel Gigabit CT Network adapter provides a configuration parameter to manually adjust the NIC interrupt moderation rate. By default the NIC driver sets this to Adaptive where the interrupt rate automatically balances

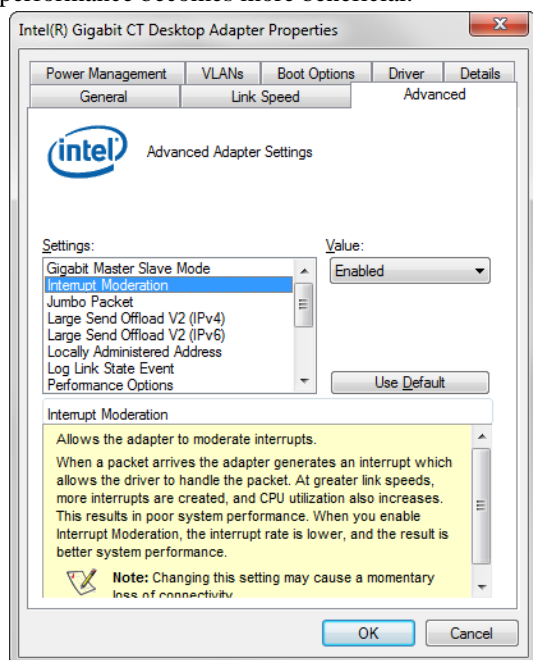
packet transmission interrupts and host CPU performance. In most cases no manual optimization of the Interrupt Moderation Rate parameter is required.

In some conditions, video frames from the GigE Vision detector may be transferred to the host display or memory buffer as data bursts instead of a smooth continuous stream. The NIC may be over-moderating acquisition interrupts to avoid over-loading the host CPU with interrupts. If priority is required for acquisition transfers (i.e. a more real-time system response to the detector transfer) then the moderation rate should be set to “maximum” by manually adjusting the NIC parameter.

In the end, this is a compromise:

1. Enable interrupt moderation to minimize CPU usage, at the expense of a slight increase in latency (**recommended**).
2. Disable interrupt moderation to favor responsiveness of real-time system with a drawback in CPU usage.

In most situations, extra latency introduced by interrupt moderation is very low and thus the gain on CPU performance becomes more beneficial.



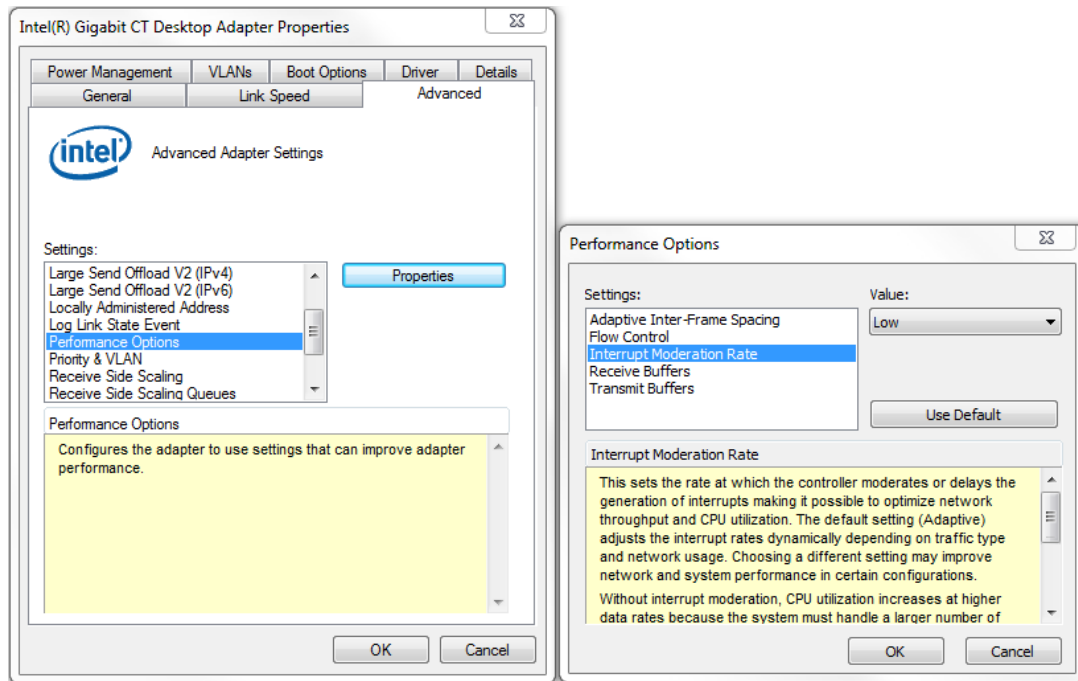
Receive Buffers

Under certain conditions the host PC system CPU may be busy with tasks other than the imaging application.

Incoming image packets remain in the PC memory allocated to store packets instead of immediately being copied into the image buffer. By increasing the number of NIC (network interface card) receive buffers, more incoming image packets can be stored by the NIC before it must start discarding them. This provides more time for the PC to switch tasks and move image packets to the image buffer.

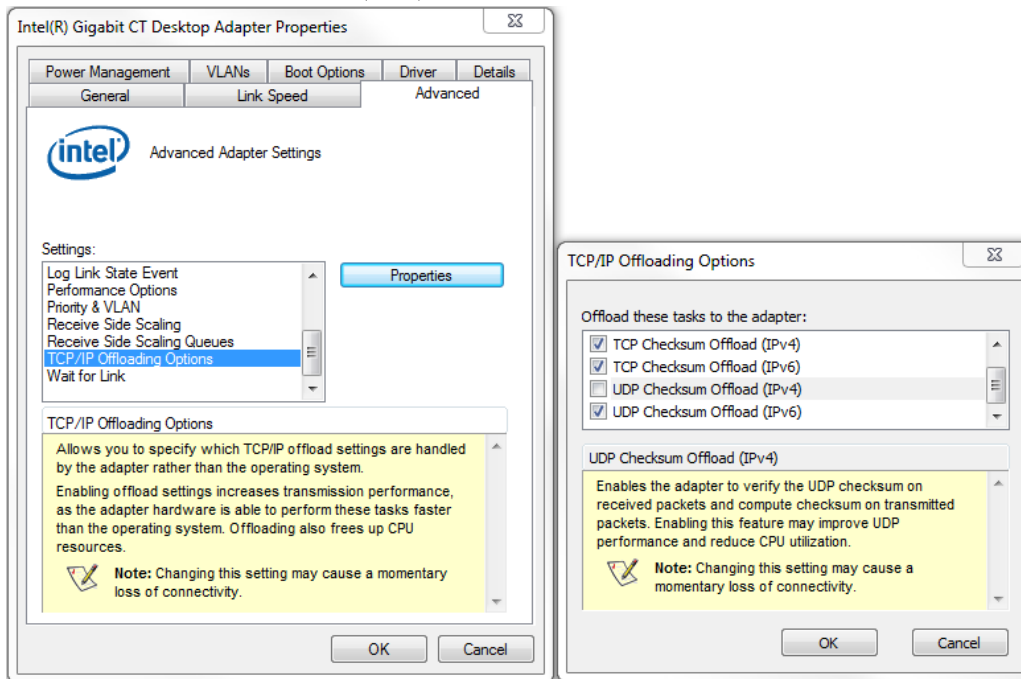
Not all network boards allow increases to their receive buffer count. Among those that do, different versions will have different maximum receive descriptor values.

We recommend increasing the receive buffer size to the maximum permitted by the network card, in order to provide more buffering capacity when needed.



UDP Checksum Offload (IPv4)

Disable UDP Checksum Offload (IPv4).



Flow Control

The GigE Vision standard defines an inter-packet delay that can be used to manage flow control (i.e. the speed at which stream packet can be output to the network). This is useful when connecting multiple detectors to the same port of the network card, or when the network card/Ethernet switch (if used) is simply too slow to process those packets. A careful selection of equipment will ensure that the network equipment is fast enough to handle data

transmitted to the wire-speed of 1 Gigabit per second. Therefore, inter-packet delay is typically only used when multiple detectors are connected to the same port of the network card, through an Ethernet switch. It is important to consider that inter-packet delay inserts a minimum delay between image packets to spread packet transmission over a longer period of time. This can directly impact system latency as more time than could be necessary is put in between those packets. The best approach for real-time imaging is to dedicate a different network port to each detector. This way, the inter-packet delay can be eliminated in many cases. Some network equipment also supports the optional IEEE802.3 PAUSE mechanism. This is a low-level handshake to ensure the receiver of the packets is not overwhelmed by the amount of data. It can propagate a pause signal back to the transmitter, asking to momentarily stop the data transmission (with a possible impact on the overall system latency). Again, by combining network equipment that can operate at wire-speed and allocating a different network interface port for each detector in the system, we can ensure these pause requests will not be used.

Connecting

1. After the install is complete, plug in the detector communication cable.
2. Power up the detector.
3. After powering up the detector, the application automatically detects the detector. This may take up to 1 minute. Wait until the detector connected indicator in the task bar (shown below) has confirmed that a connection has been established (the red cross over the camera icon disappears).



Checking detector status and information in Gigabit Ethernet

When you add or remove a detector from the network, it is automatically detected by the GigE server. A manual network scan can also be launched by right-clicking the camera icon and selecting “Scan Network” from the menu options. This action will refresh the information of the device connected to the network.

After the detector connection has been established, the status of the connection can be displayed by double-clicking the camera icon in the task bar. The device status window displays the serial number of the detector that has been detected on the network and its current status. Additional information with respect to the detector model, serial number and MAC address is also displayed.

The user can also view the detector and the PC IP addresses in this window. The default assigned detector IP address can be modified using the Teledyne DALSA Network Configuration Tool, which is part of the installation package.

The screenshot shows a window titled "GigE Vision Device Status" with a menu bar (File, Help) and a table of device information. The table has columns for Manufacturer, Model, Serial number, MAC address, Status, Camera IP, NIC IP, Filter driver, MaxPktSize, Firm ver, User name, and At. The first row of data shows a Teledyne D... Shad-o-Box 1K HS with a serial number of Change Me, MAC address 00:11:22:33:44:55, and status Available. The Camera IP is 169.254.3.168 and the NIC IP is 169.254.242.152. The Filter driver is Enable, MaxPktSize is 0, Firm ver is 0, User name is <Empty>, and At is 001.



Manufacturer	Model	Serial number	MAC address	Status	Camera IP	NIC IP	Filter driver	MaxPktSize	Firm ver	User name	At
Teledyne D...	Shad-o-Box 1K HS	Change Me	00:11:22:33:44:55	Available	169.254.3.168	169.254.242.152	Enable	0	0	<Empty>	001

9. Acquiring Images

The Spera CamExpert tool is the interfacing tool for GigE Vision detectors and cameras, and is supported by the Spera library and hardware. When used with a Rad-icon detector, CamExpert allows a user to test most of the operating modes. Additionally CamExpert saves the Rad-icon user settings configuration to the detector or saves multiple configurations as individual detector parameter files on the host system (*.ccf).

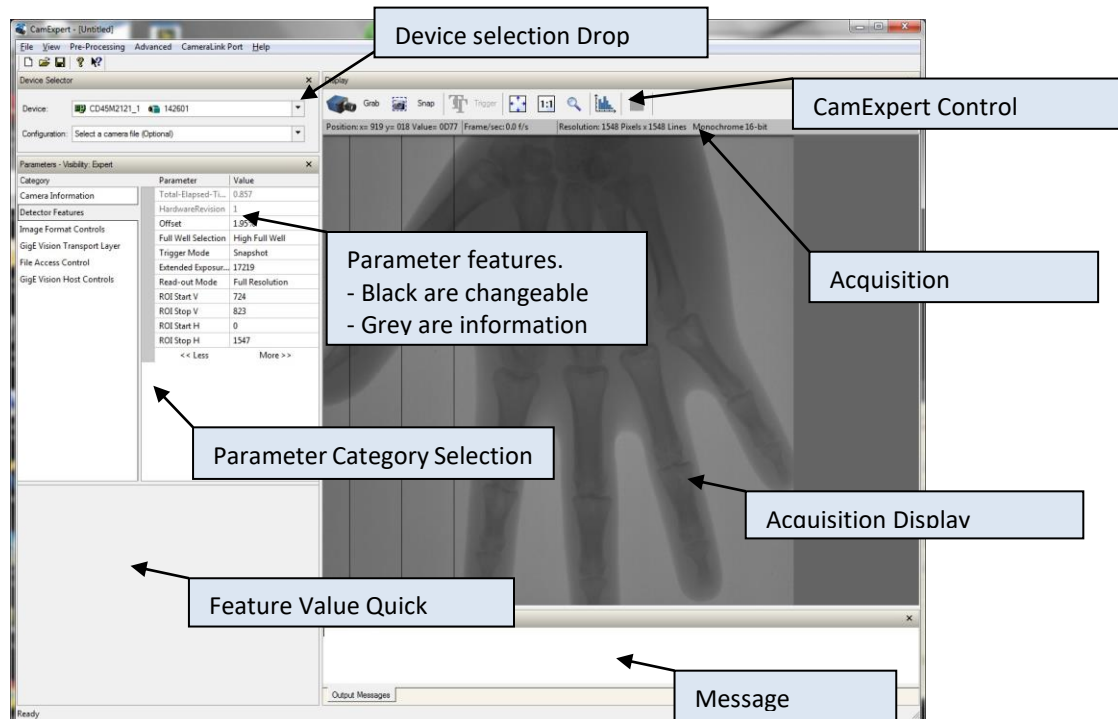
An important component of CamExpert is its live acquisition display window which allows immediate verification of timing or control parameters without the need to run a separate acquisition program.

Click on any parameter and a short description is displayed below the Category pane. The same context sensitive

help is available by clicking on the  button then click on a detector configuration parameter. Click on the  button to open the help file for more descriptive information on CamExpert.





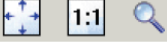

CamExpert Panes

The various areas of the CamExpert tool are described in the summary figure below. GigE Vision device Categories and Parameter features are displayed as per the device's XML description file. The number of parameters shown is dependent on the View mode selected (Beginner, Expert, Guru – see description below).



- **Device pane:** View and select from any installed GigE Vision or Samera acquisition device. After a device is selected CamExpert will only present parameters applicable to that device.
- **Parameters pane:** Allows viewing or changing all acquisition parameters supported by the acquisition device. CamExpert displays parameters only if those parameters are supported by the installed device. This avoids confusion by eliminating parameter choices when they do not apply to the hardware in use.
- **Display pane:** Provides a live or single frame acquisition display. Frame buffer parameters are shown in an information bar above the image window.

- **Control Buttons:** The Display pane includes CamExpert control buttons. These are:

 Grab  Freeze	Acquisition control button: Click once to start live grab, click again to stop.
 Snap	Single frame grab: Click to acquire one frame from device.
 Trigger	Software trigger button: With the I/O control parameters set to Trigger Enabled / Software Trigger type, click to send a single software trigger command.
	CamExpert display controls: (these do not modify the frame buffer data) Stretch (or shrink) image to fit, set image display to original size, or zoom the image to any size and ratio. Note that under certain combinations of image resolution, acquisition frame rate, and host computer speed, the CamExpert screen display may not update completely due to the host CPU running at near 100%. This does not affect the acquisition.
	Histogram / Profile tool: Select to view a histogram or line/column profile during live acquisition.

- **Output pane:** Displays messages from CamExpert or the GigE Vision driver.

CamExpert View Parameters Option

All detector features have a Visibility attribute which defines its requirement or complexity. The states vary from Beginner (features required for basic operation of the device) to Guru (optional features required only for complex operations).

CamExpert presents detector features based on their visibility attribute. CamExpert provides quick Visibility level selection (Beginner/Expert/Guru) via controls below each Category Parameter list [<< Less More >>]. The user can also choose the Visibility level (Beginner/Expert/Guru) from the View - Parameters Options menu.

The user has the option to either snap an image or to grab multiple images. Snapping an image produces a single frame, whereas the grabbing process generates multiple frames by operating in a continuous mode.

To snap an image:

Click the *Snap* button. The Detector has now snapped a single frame. The image appears in the GUI window.

To grab multiple images:

Click the *Grab* button. The detector is now armed and ready to acquire images in continuous mode.

To stop a *Grab* process the user must press the *Freeze* button. After the *Freeze* button is pressed the detector ignores any additional triggers and no additional images are acquired.

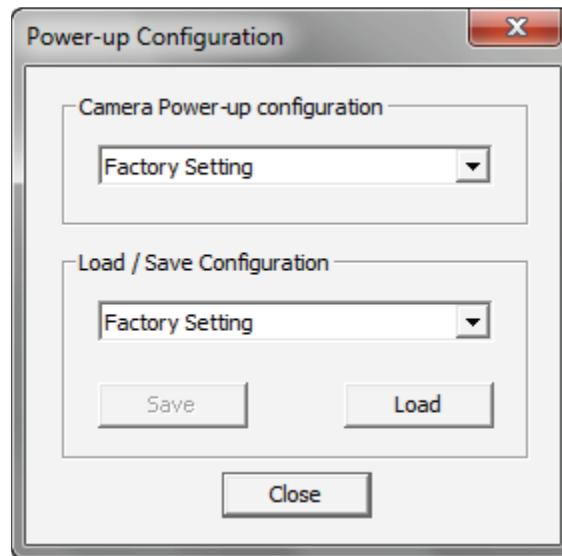
10. Camera Information

The following table describes the parameters Display Name as shown in CamExpert and their feature name, accessibility (RO=ReadOnly, RW=Read/Write, WO=WriteOnly) and description.

Display Name	Feature	Acc	Description
Manufacturer Name	DeviceVendorName	RO	Displays the device vendor name.
ModelName	DeviceModelName	RO	Displays the device model name.
Device Version	DeviceVersion	RO	Displays the device firmware version. This tag will also highlight if the firmware is a beta or custom design.
Device Product ID and Build number	DeviceProductIDBuild	RO	Provides the hardware Product ID and software Build Number
Hardware Revision	HardwareRevision	RO	Processing board hardware revision
Serial Number	DeviceID	RO	Displays the device's factory set camera serial number.
MAC Address	deviceMacAddress	RO	Displays the unique MAC (Media Access Control) address
Device User ID	DeviceUserID	RW	Feature to store a user-programmable identifier of up to 15 characters. The default factory settings is empty.
Device Reset	DeviceReset	WO	Resets the device to its power up state.
Power-up Configuration Selector	UserSetDefaultSelector	RW	Selects the camera configuration set to load and make active on camera power-up or reset. The camera configuration set are stored in camera non-volatile memory. (RW)
<i>Factory Setting</i>	<i>FactorySetting</i>		<i>Load factory default feature settings.</i>
<i>UserSet1</i>	<i>UserSet1</i>		<i>Select the user defined configuration UserSet 1 as the Power-up Configuration.</i>
<i>UserSet2</i>	<i>UserSet2</i>		<i>Select the user defined configuration UserSet 2 as the Power-up Configuration.</i>

Display Name	Feature	Acc	Description
User Set Selector	UserSetSelector	RW	Selects the camera configuration set to load feature settings from or save current feature settings to. The Factory set contains default camera feature settings.
<i>Factory Setting</i>	<i>FactorySetting</i>		<i>Select the default camera feature settings saved by the factory.</i>
<i>UserSet1</i>	<i>UserSet1</i>		<i>Select the User Defined Configuration space UserSet1 to save to or load from features settings previously saved by the user.</i>
<i>UserSet2</i>	<i>UserSet2</i>		<i>Select the User Defined Configuration space UserSet2 to save to or load from features settings previously saved by the user.</i>
Load Configuration	UserSetLoad	WO	Loads the camera configuration set specified by the User Set Selector feature, to the camera and makes it active
Save Configuration	UserSetSave	WO	Saves the current camera configuration to the user set specified by the User Set Selector feature. The user sets are located on the camera in non-volatile memory
Temperature	DeviceTemperature	RO	The temperature on the processing board in degrees Celcius

Camera Configuration Selection Dialog



CamExpert provides a dialog box which combines the features to select the detector power-up state and for the user to save or load a detector state from memory.

Camera (Detector) Power-up Configuration

The first drop list selects the detector configuration state to load on power-up (see feature UserSetDefaultSelector). The user chooses from one factory data set or one of two possible user saved states.

User Set Configuration

The second drop list allows the user to change the detector configuration anytime after a power-up (see feature UserSetSelector). To reset the detector to the factory configuration, select Factory Setting and click Load. To save a current detector configuration, select User Set 1 or 2 and click Save. Select a saved user set and click Load to restore a saved configuration.

Note: A firmware reboot (power cycling) may be required after resetting the user set configuration to the Factory Setting.

Detector Control

The Rad-icon Detector controls, as shown by CamExpert, groups the detector-specific parameters. The features which are underlined link to the paragraph which describes these features in more detail.

Display Name	Feature	Acc	Description
Read-Out Mode	ReadOutMode	RW	Select the way the sensor is read-out
<i>Full Resolution</i>	<i>FullResolution</i>		<i>Read the full array of the image sensor</i>
<i>Binning 2x2</i>	<i>Binning</i>		<i>Bins in sensor vertically and digital in FPGA for horizontally direction</i>
<i>Region of Interest</i>	<i>ROI</i>		<i>Select a region in the full image array</i>
Trigger Mode	Trigger Mode	RW	Controls by what source initiate and how the sensor read-out
<i>Free Running</i>	<i>FreeRunning</i>		<i>Detector uses internal timing</i>
<i>Triggered</i>	<i>ExtTrigger</i>		<i>Read-out of sensor occurs on falling-edge of trigger input</i>
<i>Snapshot</i>	<i>Snapshot</i>		<i>Sensor reset occurs on rising edge and sensor read-out occurs on falling-edge of trigger input</i>
<i>Software trigger</i>	<i>Software trigger</i>	WO	<i>Generates a software trigger to start the acquisition in external and snapshot mode</i>
<i>Not Enabled</i>	<i>Not Enabled</i>		<i>When in FreeRunning mode feature is disabled</i>
<i>Press...</i>	<i>Press...</i>		<i>When in Triggered or Snapshot the button generates internal trigger signal</i>
<i>Software Trigger Integration Time (us)</i>	<i>SoftwareTrig intTime</i>		<i>Software Trigger Integration Time (Snapshot mode only)</i>
<i>Extended Exposure / Frame interval (us)</i>	<i>ExtendedExposure FrameInterval</i>	RW	<i>Time in microseconds between two successive read-outs in FreeRunning Trigger Mode</i>
<i>Full Well Selection</i>	<i>FullWell</i>	RW	<i>Selects the full well of the pixels in the detector array</i>
<i>High Full Well</i>	<i>HighFullWell</i>		<i>Large capacitor</i>
<i>Low Full Well</i>	<i>LowWell</i>		<i>Small capacitor</i>
ROI Start H	ROIStartH	RW	Horizontal start position for ROI mode
ROI Stop H	ROIStopH	RW	Horizontal stop position for ROI mode
ROI Start V	ROIStartV	RW	Vertical start position for ROI mode
ROI Stop V	ROIStopV	RW	Vertical stop position for ROI mode

Offset	Offset	RW	Sensor dark ADC offset level; based on full scale of sensor
<i>0%</i>	<i>Offset0pct</i>		<i>0</i>
<i>1.95%</i>	<i>Offset1pct95</i>		<i>1,95% of 16384</i>
<i>3.9%</i>	<i>Offset3pct9</i>		<i>3.9% of 16384</i>
<i>6.25%</i>	<i>Offset6pct25</i>		<i>6.25% of 16384</i>
Digital Gain	<i>Digital Gain</i>	<i>RW</i>	<i>1X or 2X gain</i>

Read-Out Mode

When the TriggerMode is set to FreeRunning the frame period called frame interval can be calculated for all Read-Out Modes by adding the Extended Exposure to the frame read-out time. The Frame Interval or Extended Exposure value must be chosen high enough that the throughput bandwidth of the GigE link is below 100MByte/second.

Full Resolution

In this Read-Out Mode the full resolution of the sensor is read out and streamed to the host system.

The minimum frame period of a full-resolution frame depends on the Shad-o-Box HS model. See Shad-o-Box HS command reference document for details.

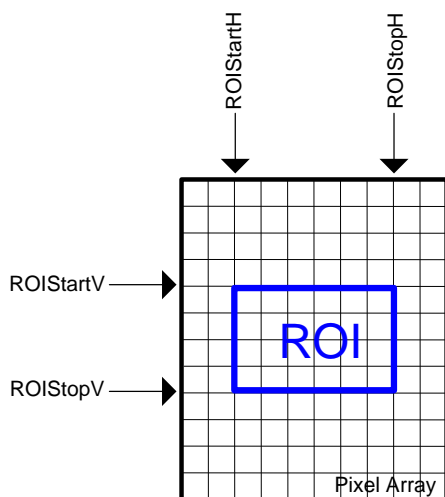
Binning 2x2

The detector supports 2x2 pixel binning.

The minimum frame period of a 2x2 pixel binned frame depends on the Shad-o-Box HS model. See Shad-o-Box HS command reference document for details.

Region of Interest

With Region of Interest (ROI) a region in the pixel array can be selected to read-out from the pixel array from the sensor and transferred to the host system as shown in the figure below.



Selecting fewer lines in vertical direction gives the possibility to increase the frame rate as fewer lines need to be read out from the pixel array.

Selecting fewer pixels in horizontal direction does not increase the frame rate from the image sensor but can be helpful if the bandwidth of GigE is limiting the frame rate.

Due to sensor architecture and restrictions of the GigE Vision interface the following requirements apply:

- ROIStartV must be multiple 2
- ROIStopV must be multiple 2
- ROIStartH must be multiple 4
- ROIStopH must be multiple 4

The ROIStartV and ROIStopV locations are defined relative to the start position of the CMOS readout, and are influenced by the detector readout direction setting. For further details, please refer to paragraph Error! Bookmark not defined..

Trigger Mode

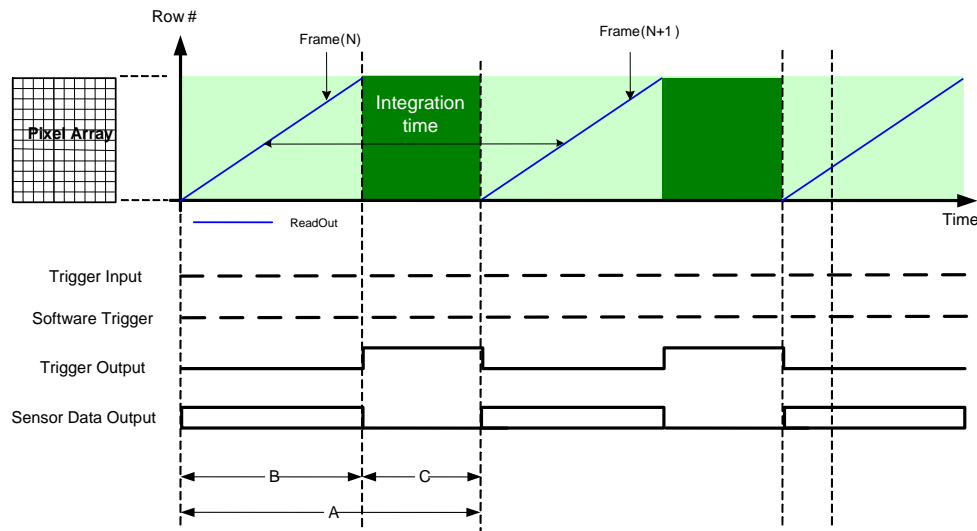
The detector is equipped with 3 different trigger modes: FreeRunning-, Triggered- and Snapshot mode. The next sections describe how the detector behaves in these different modes making use of Trigger input– or software trigger command.

FreeRunning Mode

In this mode the detector will run continuously on internal timing. No trigger input is required to initiate a frame read-out. The frame rate is determined by the time between successive frame read-outs which can be set by the Frame Interval feature.

The Frame Interval value must be chosen high enough that the bandwidth of the GigE is below 100MByte/second. In FreeRunning mode the sensor will integrate and read-out continuously even when the host does not acquire any images. However the trigger output is suppressed when no images are acquired, this is useful to see at what moment an integration period will be acquired and streamed to the host system.

When a grab is started the next integration period will be acquired and sent to the host system. If a grab is started but the sensor is still in the integration period this frame will be dropped and the following frame will be send to the host system; this to avoid changes to the sensor during the integration period (which can happen before acquiring images).



	Full Resolution	Binning 2x2	ROI
A: Integration Time	B + C	B + C	B + C
B: Read-out Time	varies (*)	varies(*)	varies(*)
C: Frame Interval (or Extended Exposure)	1 ms – 60 sec	1ms – 60sec	1 ms – 60 sec

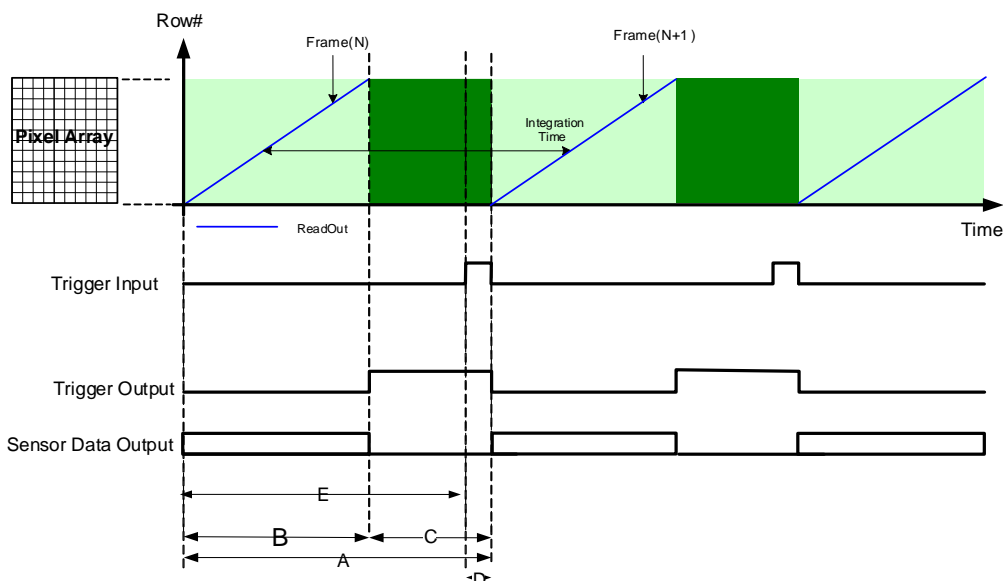
(*) Depends on Shad-o-Box HS model. See Command Reference for details.

Triggered (External) Mode (Not for Shad-o-Box1kHS and Shad-o-Box 2kHS)

In this mode the detector will take a single image at the moment a trigger signal is applied to the detector. This mode is equal to the Snapshot mode but no reset is needed before integration can start.

When using pulsed X-rays, the X-ray exposure including X-ray rise- and fall-times have to be within the “Exposure Time” window (C).

The trigger output indicates the Exposure Time window when no read-out of the sensor occurs.



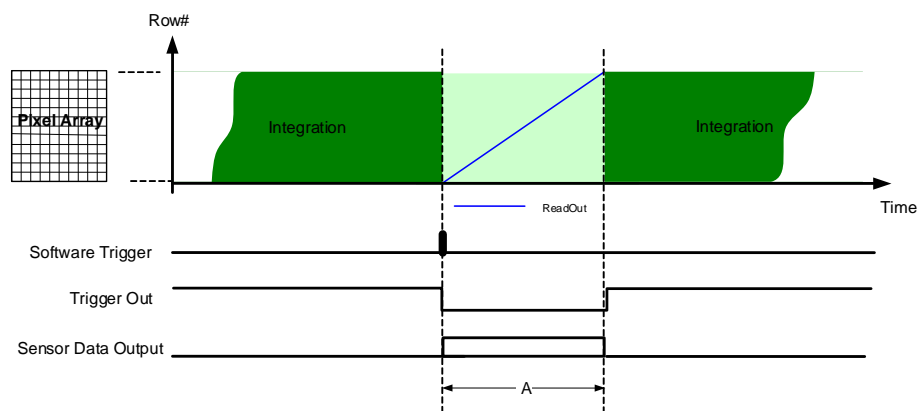
	Full Resolution	Binning 2x2	ROI
A: Integration Time	Trigger input period		
B: Read-out Time	varies (*)	varies (*)	varies (*)
C: Frame Interval (or Extended Exposure)	> 1 ms	> 1 ms	A - B
D: Minimal Trigger In high	> 1 ms		
E: Minimal Trigger In low	B	B	B + C - D

(*) Depends on Shad-o-Box HS model. See Command Reference for details.

Triggered mode using Software Triggering

In this mode the detector will take a single image at the moment a Software trigger signal is applied to the detector. No reset will be applied before read out.

The trigger output indicates the Exposure Time when no read-out of the sensor occurs.



Timing diagram Triggered mode using Software trigger.

	Full Resolution	Binning 2x2	ROI
A: Readout Time	varies (*)	varies (*)	See ROI

Snapshot Mode using external triggering

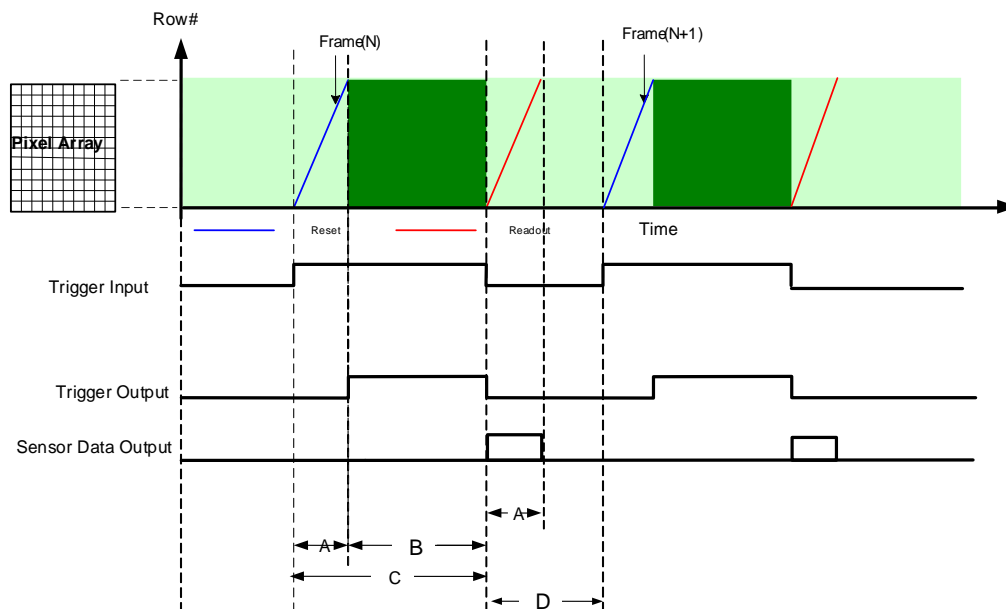
In Snapshot mode the detector will initiate a detector reset at rising edge of the trigger signal applied to the trigger input. Succeeding to this it will readout the detector at the falling edge of the trigger signal on the trigger input.

The detector reset is actually a normal readout of the detector, but the data is discarded.

The trigger output indicates the Exposure Time when no reset or readout of the detector occurs.

To allow sufficient time for the sensor reset, the delay between rising edge of the trigger input and when the detector is exposed to x-ray should equal to or higher than the reset time of the detector (D).

The Snapshot mode using external triggering is not available on the Shad-o-Box 1kHS.



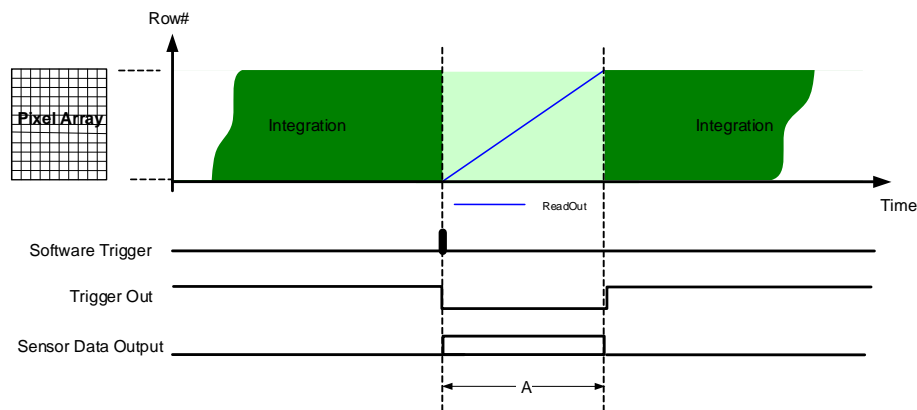
	Full Resolution	Binning 2x2	ROI
A: Read-out Time/ Reset Time	varies (*)	varies (*)	varies (*)
B: Integration Time	C-A (trigger active high -Reset time)	C-A (trigger active high -Reset time)	See ROI
C: Exposure Time = Trigger Output	C - A		
C: Trigger active high	A+B		
D: Trigger active low	>A		

(*) Depends on Shad-o-Box HS model. See Command Reference for details.

Snapshot mode using Software Triggering

In this mode the detector will take a single image at the moment a Software trigger signal is applied to the detector. No reset will be applied before read out.

The trigger output indicates the Exposure Time when no read-out of the sensor occurs (Not for the Shad-o-Box 1kHS).



Timing diagram Snapshot mode using Software trigger.

	Full Resolution	Binning 2x2	ROI
A: Readout Time	varies (*)	varies (*)	See ROI
B: Trigger Output	Programmed value set by "Software Trigger Integration Time"		

(*) Depends on Shad-o-Box HS model. See Command Reference for details.

Image Format Control

The Rad-ikon Image Format controls, as shown by CamExpert, group parameters used that give information about the resolution and pixel format.

Display Name	Feature	Acc	Description
PixelFormat	PixelFormat	RO	Format of the pixel provided by the device. Contains all information as provided by PixelCoding, PixelSize combined in one single value
<i>Monochrome 14-Bit</i>	<i>Mono14</i>		<i>14 bit packed on lowest bits in 2 bytes</i>
<i>Monochrome 16-Bit</i>	<i>Mono16</i>		<i>14 bit packed on highest bits in 2 bytes</i>
Pixel Size	PixelSize	RO	Total Size in bits of an image pixel
<i>Mono</i>	<i>Mono</i>		<i>Pixel is monochrome</i>
<i>MonoPacked</i>	<i>MonoPacked</i>		<i>Pixel is monochrome and packed</i>
Width	Width	RO	Width of the Image provided by the device (in pixels)
Height	Height	RO	Height of the Image provided by the device (in pixels)

Image Processing Control (not available on SB2kHS)

The following image (pre-)processing operations are considered standard practice in today's digital imaging applications, prior to distilling technical or clinical information through further image (post-)processing operations: Defect Pixel Correction (DPC), in which defective or deviating pixels in the image are interpolated using

information from neighboring pixels; and

Flat Field Correction (FFC), a combination of black (offset) and gain correction, in which spatial non-uniformities in the images due to detector or system (X-ray source, collimation) characteristics are corrected to reduce fixed pattern noise and optimize dynamic range.

The Rad-icon Detector controls, as shown by CamExpert, groups the image processing specific parameters. Defect Pixel Correction (DPC) and Flat Field Correction (FFC) functions are supported by the detector. The calibration reference maps required for DPC and FFC operations are loaded in the detector's non-volatile memory, for each *Readout*. A set of factory maps and a set of customer maps are available. The factory maps are read-only while the customer maps can be updated by the User.

The DPC and FFC functions can be used in combination with different *Trigger* and *Region of Interest* readout modes.

The function features are listed in the table below; the following paragraphs describe these features in more detail.

Display Name	Feature	Acc	Description	Factory default	Min	Max
FFC Enable	FFCEnable	RW	Turns On/Off Flat Field Correction	Off	-	-
Off	Off		Off: Disabled	-	-	-
On	On		On: Enabled	-	-	-
FFC Processing	FFCActive	RO	Shows if FFC processing is enabled and activated	-	-	-
Not Active	Not Active		FFC processing not active	-	-	-
Active	Active		FFC processing active	-	-	-
FFC Mode	FFCMode	RW	Changes Mode for Flat Field Correction	Normal	-	-
Normal	Normal		Default Flat Field Correction Mode	-	-	-
New Dark	New Dark		Writes New Dark for Flat Field Correction	-	-	-
Validate Dark	Validate Dark		Validate dark map			
Validate Gain	Validate Gain		Validate Gain map			
FFC New Dark Weight	FFCNewDarkWeight	RW	Select Weight for Dark reference update	10	0	100
Dark Map Save to Flash	FFCNewDarkSaveFlashReq	RW	Save Dark Map to Flash	-	-	-
FFC NewDark Status	FFCNewDarkStatus	RO		-	-	-
Map Select	FFCMapSelect	RW	Select automatic or manual FFC map selection	Auto	-	-
Auto	Auto		Automatic set FFC maps	-	-	-
Manual	Manual		Manual set FFC maps	-	-	-
Factory/Customer Map Select	FFCFileSetSelectCustomerMode	RW	Indicates the mode of Customer or Factory map	Auto	-	-
Auto	Auto		Use customer maps if exist else factory maps	-	-	-
Customer	Customer		Force using customer maps	-	-	-
Factory	Factory		Force using factory maps	-	-	-
FFC Gain Map	FFCFileSetSelectGainMode	RW	Indicates the map of file Gain selection	-	-	-
Map 0 ... 7	Map0 ... 7		Gain Map 0 ... 7	-	-	-
FFC Gain Map Status	FFCFileGainMapStatus	RO	Shows if selected Gain Map is valid	-	-	-
Ok	Ok		No Error	-	-	-
Invalid FullWell	InvalidFullWell		Invalid FullWell	-	-	-
Invalid Resolution	InvalidResolution		Invalid Resolution	-	-	-
No Memory	NoMemory		No Memory	-	-	-
No File	NoFile		No File	-	-	-
Invalid Dark Map	InvalidDarkMap		Invalid Dark Map	-	-	-
Invalid Gain Map	InvalidGainMap		Invalid Gain Map	-	-	-
Undefined Error	UndefinedError		Undefined Error	-	-	-
Not Initialised	NotInitialised		Not Initialised	-	-	-
FFC Dark Map	FFCFileSetSelectDarkMap	RW	Indicates the map of file Dark selection	-	-	-
Map 0 ... 7	Map0 ... 7		Dark Map 0 ... 7	-	-	-
FFC Dark Map Status	FFCFileDarkMapStatus	RO	Shows if selected Dark Map is valid	-	-	-
Ok	Ok		No Error	-	-	-
Invalid FullWell	InvalidFullWell		Invalid FullWell	-	-	-
Invalid Resolution	InvalidResolution		Invalid Resolution	-	-	-
No Memory	NoMemory		No Memory	-	-	-
No File	NoFile		No File	-	-	-
Invalid Dark Map	InvalidDarkMap		Invalid Dark Map	-	-	-
Invalid Gain Map	InvalidGainMap		Invalid Gain Map	-	-	-
Undefined Error	UndefinedError		Undefined Error	-	-	-
Not Initialised	NotInitialised		Not Initialised	-	-	-
DPC Enable	DPCEnable	RW	Turns On/Off Defect Pixel Correction	Off	-	-
On	On		On: Enabled	-	-	-
Off	Off		Off: Disabled	-	-	-
DPC Processing	DPCActive	RO	Shows if DPC processing is enabled and activated	-	-	-

Not Active	NotActive		DPC processing not active	-	-	-
Active	Active		DPC processing active	-	-	-
DPC Error Handling	DPCErrorHandling	RW	Changes Defect Pixel Correction Error Handling	SetWhite	-	-
Set Pixel to White	SetWhite		Set Pixel to White	-	-	-
Keep Original Pixel	KeepOriginal		Keep Original Pixel	-	-	-
DPC Enable	DPCEnable	RW	Turns On/Off Defect Pixel Correction	Off	-	-
Normal	Normal		Normal	-	-	-
Validate Defects	Validate Defects		Validate defects map	-	-	-

Defect Pixel Correction

To enable Defect Pixel Correction, set the *DPC Enable* to *On* (default setting).

By means of *Factory/Customer Map Select* the selection of the active map can be influenced. When it's on *Auto*, Customer maps have priority if available else the Factory maps will be used. *DPC Processing* will show *Active* when a valid DPC map is in use.

Flat Field Correction

To enable Flat Field Correction, set the *FFC Enable* to *On* and the *FFC Mode* to *Normal* (default setting).

By means of *Factory/Customer Map Select* and *Map Select*, the selection of the active reference maps can be influenced. When both are on *Auto*, the 1st dark and gain map in the row which fits to the resolution and full well capacity setting will be selected. Customer maps have priority over Factory maps. When *Factory/Customer Map Select* is set to *Factory* or *Customer*, the selection will be limited to those categories.

When *Map Select* is set to *Manual*, the active FFC Gain and FFC Dark map can be selected from a list of EIGHT maps (Map 0 – Map 7). Factory maps are stored in a fixed order. Customer maps can be organized to the user's preference. As an example, it is possible to store three gain maps for different exposure situations in combination with two dark maps for use with different integration times.

FFC Gain Map Status and *FFC Dark Map Status* indicate if a valid map has been selected.

FFC Processing will show *Active* when both a valid FFC Dark and FFC Gain map is in use.

The dark reference map can be updated using actual dark images from the detector, for example when capturing images with long integration time. To do so, set the *FFC Mode* to *New Dark* and perform an image *Snap*. The detector will output the requested image to the host application. In detector volatile memory, the captured image will be added to the current dark reference map using the *FFC New Dark Weight* value. The dark reference map stored in the detector's non-volatile memory, which is loaded on power-up, is not automatically updated. With *DarkMap Save To Flash* you may store this new dark reference to the Customer Dark map. *FFC NewDark Status* indicates when the save operation is finished.

Example 1: to update the actual dark reference map, for example to correct for changing detector temperature conditions, set *FFC New Dark Weight* to 20 and *Snap* a few dark images every 5-10 minutes.

Example 2: to create a fully new dark reference map, for example when the integration time is significantly changed, first set *FFC New Dark Weight* to 100 and *Snap* a dark image to overwrite the old dark reference map. Then set *FFC New Dark Weight* to 10 and *Snap* at least 32 dark images to average out the random noise in the dark image.



Ensure that the detector is not exposed to X-rays during capturing of new dark images, as this will significantly impact the usability of the updated dark reference map and the quality of the FFC operation.



Disable DPC while creating new or updated dark and gain reference maps for FFC. This will ensure that FFC will deliver optimal results.



Volatile memory space of the detector is limited. This may cause a Gain/Dark map selection issue with map 7 when all customer maps (map 0 – map 7) are used for Full Resolution modes.



After changing the *Factory/Customer Map Select* mode, the detector needs to transfer the selected *Factory/Customer Maps* to volatile memory. When this process is finished, the detector's network connection needs to be re-established.



FFC and/or DPC processing will be disabled in case not all reference maps for the selected mode are available or the wrong map is selected in *Manual Map Select* mode. The *FFC Processing* and/or *DPC Processing* field will show *Not Active*.

Defect Maps

Introduction

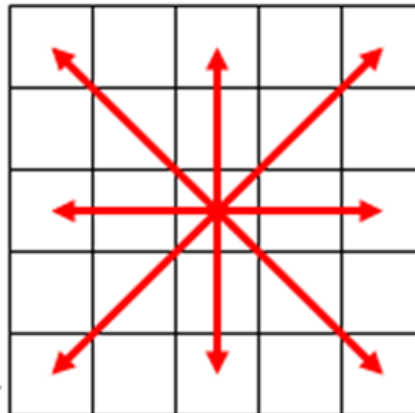
Defect pixel reference maps are stored in detector non-volatile memory. These maps contain information on the position of defective (or deviating) pixels, required for Defect Pixel Correction (DPC). These maps are detector-specific, and are generated during Teledyne DALSA factory calibration.

Separate defect pixel maps are available for different Readout- and Full Well modes. These maps are used by the detector to apply DPC on images, before streaming them over the data communications interface.

The defect map can be used by the host application to apply corrections for defect pixels in images captured from the detector. The host application may use the “Teledyne X-Ray Processing Library” functions to apply such corrections, or for the creation and uploading of new correction maps. This library and its API can be downloaded from the Teledyne DALSA FTP server (<ftp.teledynedalsa.com>) on request.

DPC Calculation

The pixel value after DPC correction is interpolated from an analysis of neighboring pixel values in a 5x5 kernel. Interpolation is performed in the direction in which the image content shows the least amount of change within this kernel.



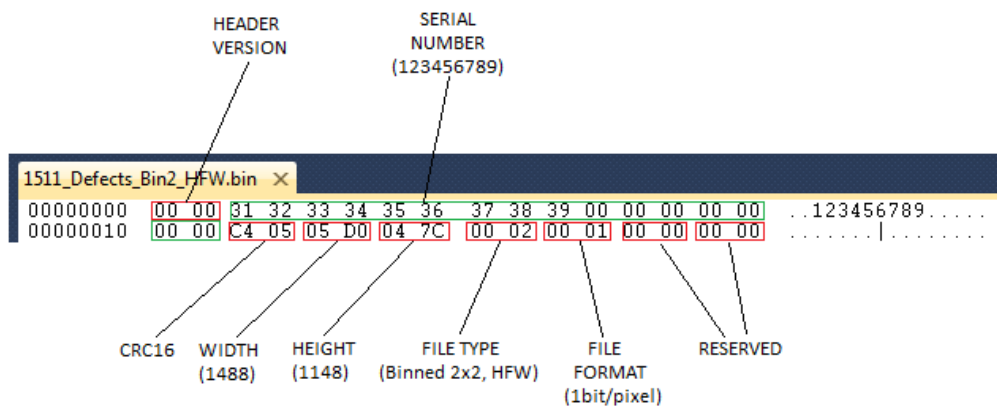
File Format

The file format of a defect map is as follows: A header indicates the specification of the defect map, and will be followed by a data block with the defect information per pixel. Only one bit per pixel is used to indicate the defect status (0 = no defect, 1 = defect). The defect status data per pixel is ordered row-by-row, left-to-right and top-to-bottom in an image displayed on a computer screen). The 32 bytes header format is described below:

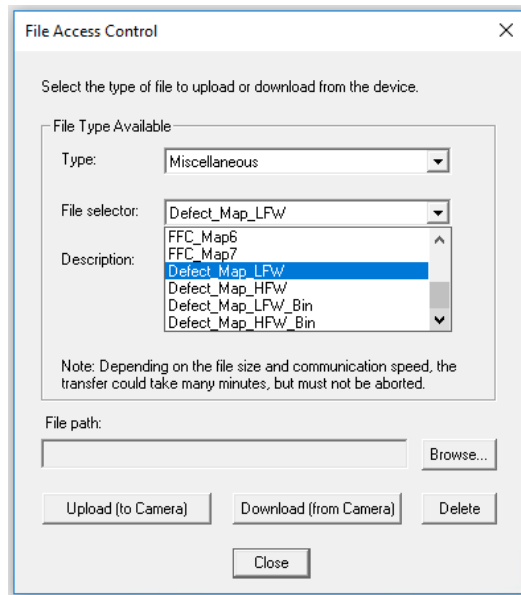
Field	Description		Endian	Bytes
Header Version	0	Version number	Big	2
Serial Number	Serial Number of detector		Big	16
CRC	CRC16 of total data file without the header		Little	2
Width	Number of columns (of full resolution image)		Big	2
Height	Number of rows (of full resolution image)		Big	2
File Type	0 1 2 3	Full Resolution, High Full Well Full Resolution, Low Full Well Binning 2x2, High Full Well Binning 2x2, Low Full Well	Big	2
File Format	1	1 bit per pixel	Big	2
Extra1	Reserved		Big	2
Extra2	Reserved		Big	2

Pixel data is always represented as 1 bit per pixel, so 8 pixels per byte.

Example of defect map file header (hex format):



Up-, downloading and deleting



The File Access Control dialog box enables up-, downloading and deleting of defect map files.

Upload

To upload a customer defect map file from the host to the detector, the *Factory/Custom Upload* selector in the *File Access Control* menu has to be set to *Customer* before opening the *File Access Control* menu through *Upload/Download File*.

Select Type Miscellaneous in the first drop list and in the second drop list the Defect Map with appropriate Resolution/Full Well mode. Press the *Browse...* button to select a defect map file on the host and press *Upload (to Camera)* to start the transfer to the detector. The upload will be confirmed with the message: **File Upload Completed.**

When attempting to upload a new defect pixel map, the detector will check the file header. In case the header is incorrect, uploading the file will be blocked with error message **The selected file write access to the device failed!.**

Delete

To delete a customer defect map file from the host, the *Factory/Custom Upload* selector in the *File Access Control* menu has to be set to *Customer* before opening the *File Access Control* menu through *Upload/Download File*.

Select Type Miscellaneous in the first drop list and in the second drop list defect map. Ensure yourself before pressing the *Delete* button, the selected file will be deleted immediately with the message: **File Deleted Successfully.**

Downloading

Both customer and factory Defect Maps can be downloaded. Set the *Factory/Custom Upload* selector in the *File Access Control* menu in the preferred position before opening the *File Access Control* menu through *Upload/Download File*.

To transfer a defect map file from the detector to the host press the button: *Download (from Camera)*. A browse screen will be opened to select the *Save as...* location on the host. Pressing the *Save* button after selecting the correct name and location, the detector will start a transfer of the defect map file of the selected Resolution/Full Well mode to the host. The download will finish with **The file download completed successfully** message.

Dark/Gain Maps

Introduction

Dark and Gain reference maps are stored in detector non-volatile memory. These maps contain information required for Flat Field Correction (FFC).

The Dark reference map is created without exposure to X-ray. The Gain reference map is calculated from dark-corrected images without object in the X-ray field.

Separate Dark and Gain maps are available for different Readout- and Full Well modes. These maps are used by the detector to apply FFC on images, before streaming them over the data communications interface.

The Dark and Gain maps can be used by the host application to apply offset and gain corrections to images captured from the detector. The host application may use the “Teledyne X-Ray Processing Library” functions to apply such corrections, or for the creation and uploading of new correction maps. This library and its API can be downloaded from the Teledyne DALSA FTP server (<ftp.teledynedalsa.com>) on request.

FFC Calculation

The pixel value after FFC correction, $FFCVal(x,y)$, is given by the following formula:

$$FFCVal(x,y) = [PixelVal(x,y) - DarkVal(x,y)] * \frac{GainVal(x,y)}{2^{UnityGainFactor}} + Offset$$

$FFCValue(x,y)$	Pixel value after FFC
$PixelVal(x,y)$	Pixel value in raw image
$DarkVal(x,y)$	Pixel value in Dark map
$GainVal(x,y)$	Pixel value in Gain map
$UnityGainFactor$	Value in map representing unity gain, as a power of 2
$Offset$	Fixed value added to prevent noise clipping

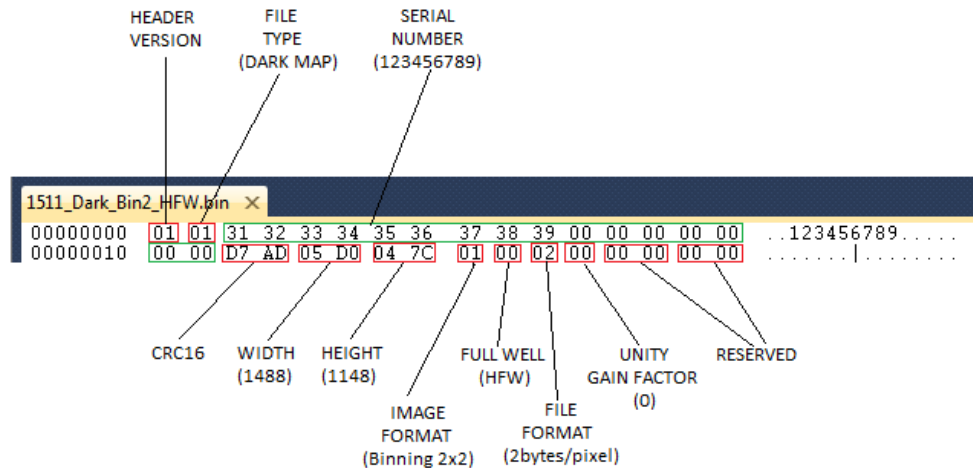
File Format

The file format of the dark (or gain) maps is as follows: a header indicates the specification of the map, and will be followed by a data block with the dark (or gain) information per pixel. The 32 bytes header format is described below:

Field	Description		Endian	Bytes
Header Version	1	Version number	Big	1
File Type	1 2	Dark map Gain map	Big	1
Serial Number	Serial Number of Detector		Big	16
CRC	CRC16 of total data file without the header		Little	2
Width	Number of columns (of full resolution image)		Big	2
Height	Number of rows (of full resolution image)		Big	2
Image Format	0 1	Full Resolution Binning 2x2	Big	1
Full Well	0 2	High Full Well Low Full Well	Big	1
Data Format	2	2 bytes per pixel	Big	1
Unity Gain Factor	0 12	for Dark map ($2^0 = 1$) for Gain map ($2^{12} = 4096$)	Big	1
Extra1	Reserved		Big	2
Extra2	Reserved		Big	2

Gain and offset map data is represented as 2 bytes (16bits) per pixel in big endian format.

Example of Gain map header (hex format):



How to Create a New Gain Map

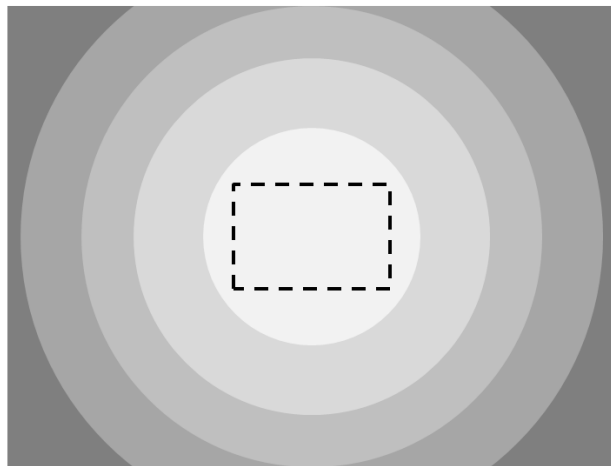


To use FFC to correct for system specific spatial intensity variations, new Gain maps should be created and uploaded to the detector as part of the factory system calibration routines.

For optimal gain correction, the Gain reference map should be created at an exposure of approximately 25% of the full scale output signal.

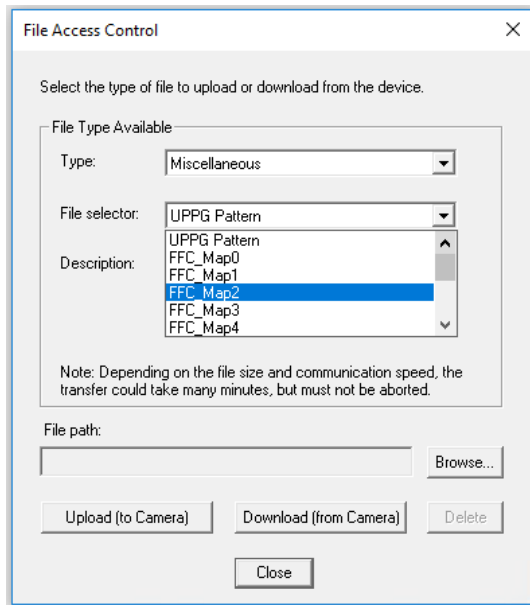
To create a new Gain map:

- Average at least 16 images captured by the detector, without any object placed in the X-ray beam.
- Subtract the average of at least 32 dark images, without X-ray exposure, using the same integration time (or frame rate) as used for capturing the X-ray images above.
- Determine the mean value of the image, in the region (ROI) where the signal value (X-ray exposure) is highest.



- For each pixel, divide this mean ROI value by the (averaged) X-ray exposed pixel value at that position (as floating point).
- Multiply the pixel values by 4096 (2^{12}), the Unity Gain Factor.
- Store the resulting pixel values (as 16-bit integer values) as the new Gain map, preceded by the appropriate file header information.

Up- , downloading and deleting



The File Access Control dialog box enables up- and downloading of dark/gain map files.

FFC_map0 till FFC_Map11 are the storage locations for Dark- and Gain Maps.

The Factory maps are stored in a fixed order. The file type per map is mentioned in the Description.

The Customer dark- and gain maps however can be stored in a random order.

Upload

To upload a customer gain- or dark map file from the host to the detector, the *Factory/Custom Upload* selector in the *File Access Control* menu has to be set to *Customer* before opening the *File Access Control* menu through *Upload/Download File*.

Select Type Miscellaneous in the first drop list and in the second drop list a FFC-Map. Press the *Browse...* button to select a dark/gain map file on the host and press *Upload (to Camera)* to start the transfer to the detector. The upload will be confirmed with the message: File Upload Completed.

Delete

To delete a customer gain- or dark map, the *Factory/Custom Upload* selector in the *File Access Control* menu has to be set to *Customer* before opening the *File Access Control* menu through *Upload/Download File*.

Select Type Miscellaneous in the first drop list and in the second drop list a FFC-Map. Ensure yourself before pressing the *Delete* button, the selected file will be deleted immediately with the message: File Deleted Successfully.

Download

Both customer and factory Gain- and Dark Maps can be downloaded. Set the *Factory/Custom Upload* selector in the preferred position before opening the *File Access Control* menu.

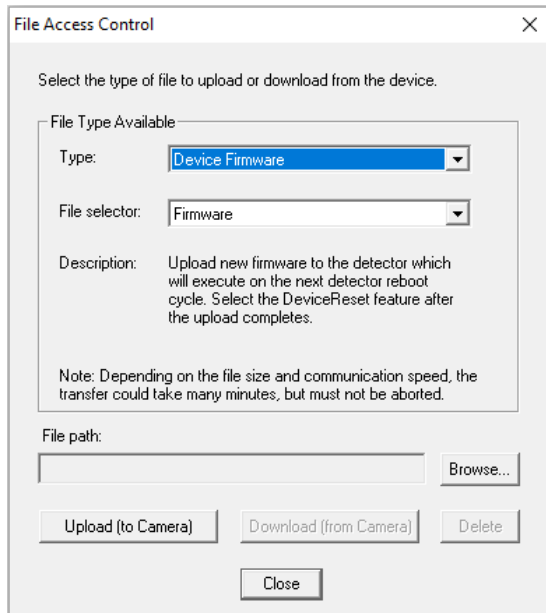
To transfer the selected FFC_map file from the detector to the host press the button: *Download (from Camera)*. A browse screen will be opened to select the *Save as...* location on the host. Pressing the *Save* button after selecting the correct name and location, the detector will start a transfer of the selected dark/gain map file to the host. The download will finish with The file download completed successfully message.

Firmware Update

Through the CamExpert file access control, a firmware update can be performed. Use the browse button to select a firmware file which has the extension CBF. The filename has the following format:

MODELNAMEFWVER.cbf

The modelname should be identical as the detector.



After uploading the file to the detector, CamExpert will request for a restart of the detector. This allows the reboot with the new firmware.

The timing control signals to the sensor of the detector are not part of the firmware but described in a separate file which is stored in the flash memory of the detector.

In some cases an update of this file is required.

The version can be seen in Camera Information > Timing Version:

Timing Version	4.3
----------------	-----

This file can be uploaded through File Access Control > Upload/Download File.

Use the browse button to select a pattern file which has the extension BIN. The filename has the following format: MODELNAME.bin

File Access Control

×

Select the type of file to upload or download from the device.

File Type Available

Type: Miscellaneous

File selector: UPPG Pattern

Description: Upload new UPPG Pattern file to detector

Note: Depending on the file size and communication speed, the transfer could take many minutes, but must not be aborted.

File path:

Browse...

Upload (to Camera)

Download (from Camera)

Delete

Close

GigE Vision Host control

The following table describes the parameter as shown in CamExpert to enable the Turbo Transfer Mode (only required for Shad-o-Box 3k/6kHS at maximum framerate).

Display Name	Feature	Acc	Description	Factory default	Min	Max
Turbo Drive Mode	TurboTransferEnable	RW	Turns On/Off Turbo drive mode	False	-	-
<i>False</i>	<i>False</i>		<i>False: Disabled</i>	-	-	-
<i>True</i>	<i>True</i>		<i>True: Enabled</i>	-	-	-

Shad-o-Box HS User Manual

p. 44

Shuttering

The Rad-icon Detector does not have a shuttering mechanism built into the detector. The detector can be operated quite normally with a continuous beam x-ray source, however there can be motion blur associated with continuous beam imaging. In the case that pulsed x-ray operation is required, the X-ray pulse must be carefully timed so that x-ray from the pulse are not incident on the detector during readout. This will cause imaging artifacts that show up as very uneven illumination within the images.

Dark Current after Standby

A first image acquired after long time in standby mode might contain unwanted signal. It is recommended to read and discard at least 2 images after standby.

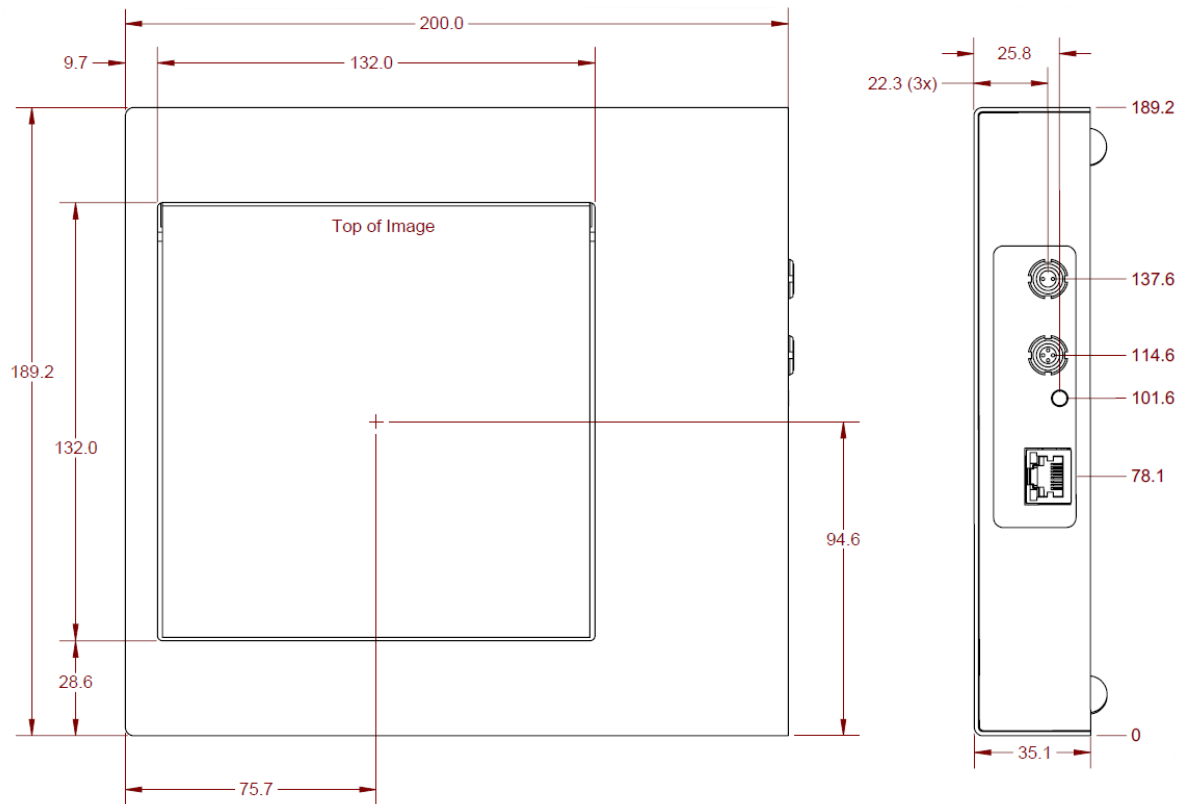
Mode switches

A first image acquired after a change of mode might contain unwanted signal. It is recommended to read and discard one or more images at the start of a new measurement sequence.

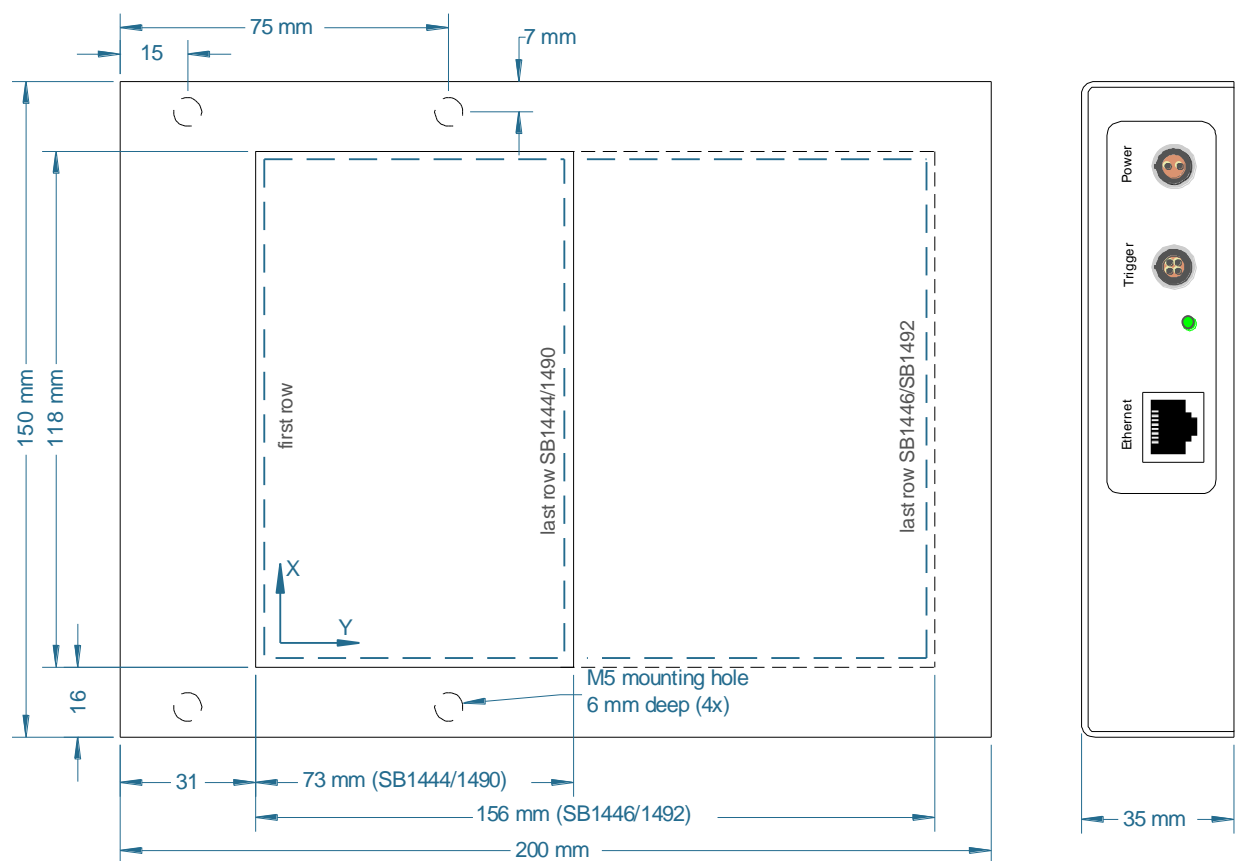
When switching from free running to any other mode the detector may output still one image because the timing sequence was already started.

11. Mechanical Drawings

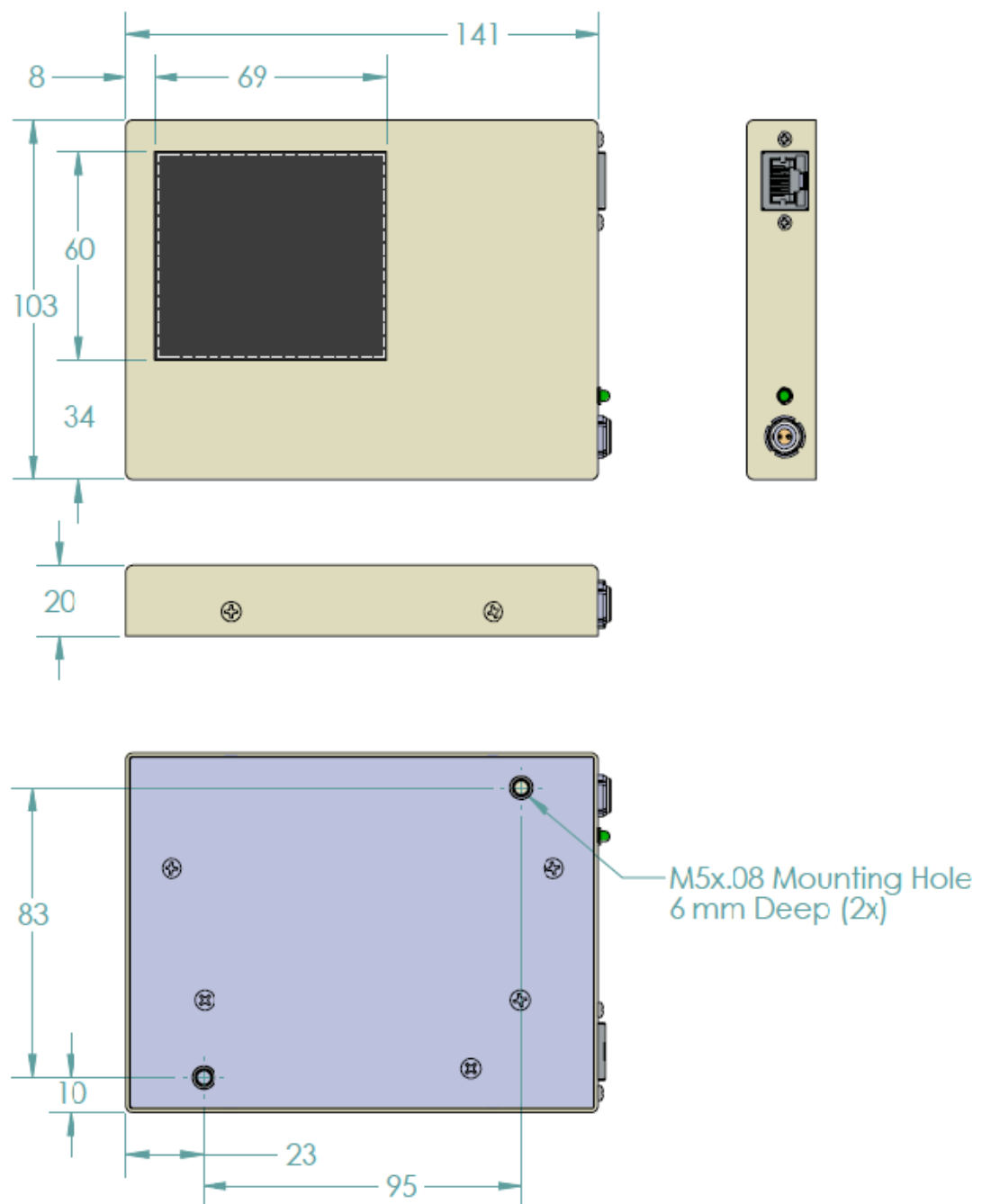
Shad-o-Box 1280 HS v2 Model (all measurements are in mm):



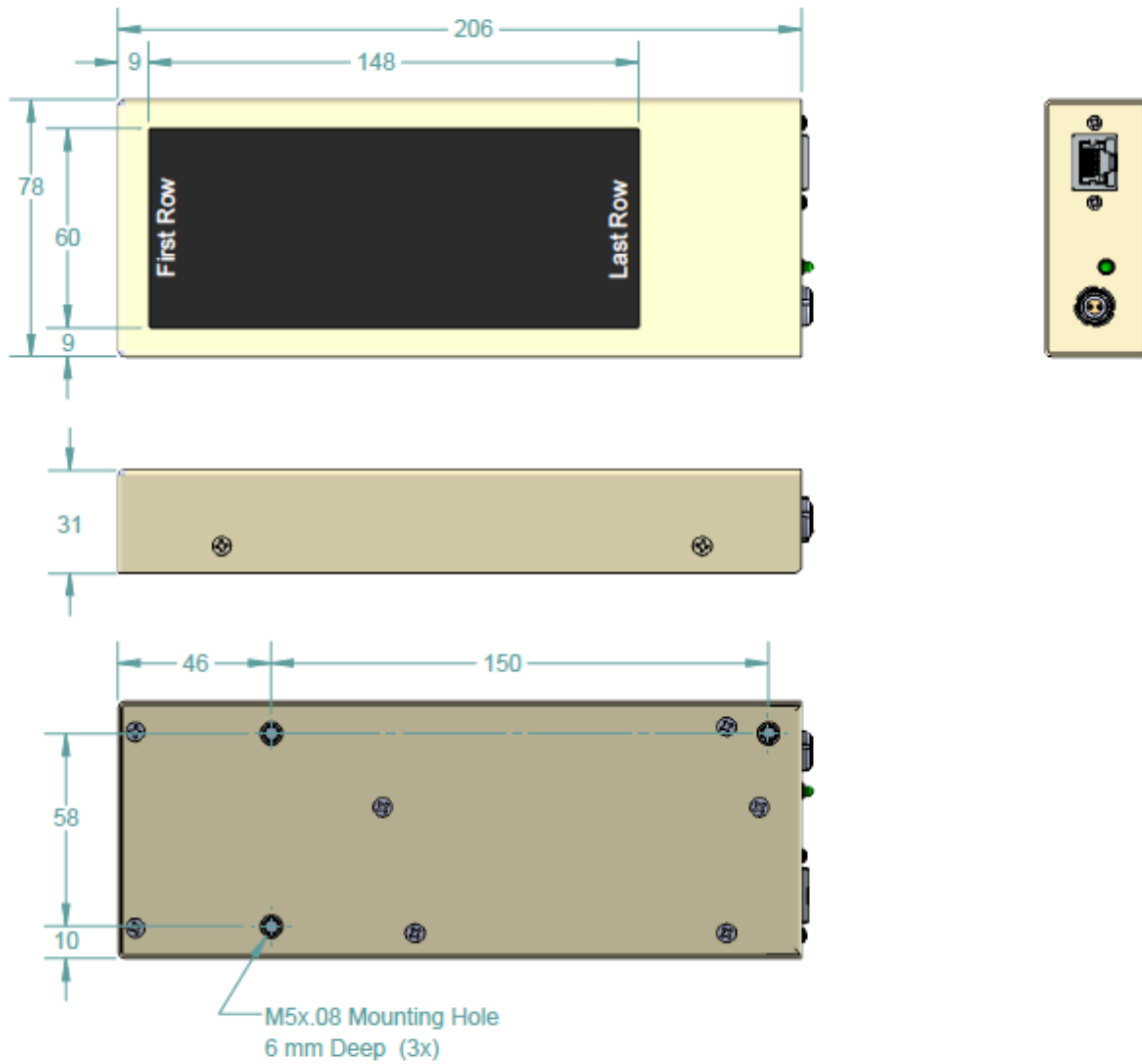
Shad-o-Box 688/3K and 1548/6K HS Models (all measurements are in mm):



Shad-o-Box 1K HS Model (all measurements are in mm):



Shad-o-Box 2K HS Model (all measurements are in mm):



Appendix A

Revision History

Revision Number	Change Description	Revision Date
01	Draft release	June 29, 2015
02	Updated connectors, software, mechanical drawing	Dec. 30, 2015
03	Minor updates	June 17, 2014
04	Minor updates	January 13, 2016
05	New address	August 30, 2017
06	New template, New address	January 12, 2018
07	Minor update (framerate SB3kHS)	May 31, 2018
08	Adding detailed detector control	November 27, 2018
09	Updated NIC configuration	May 2, 2019
10	Removed SB512/1024	May 28, 2020
11	Added FFC/DPC functionality	February 9, 2021