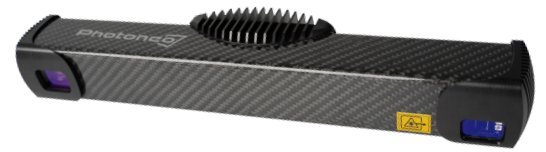


Alpha 3D Scanner L

Datasheet



| Parameter | Value |
|---|--|
| 3D Sensing Technology | Structured Light |
| Output data | 3D points (x y z) Normals (x y z) Depth Map (z) Texture (grayscale intensity) Confidence |
| Resolution | 1.5 Million 3D Points (1440 x 1080) |
| Scanning range | 870 - 2150 mm |
| Optimal scanning distance (sweet spot) | 1245 mm |
| Scanning area (at sweet spot) | 1091 x 761 mm |
| Point-to-point distance (at sweet spot) | 0.82 mm |
| Calibration accuracy (1 σ) | 0.50 mm |
| Temporal noise (1 σ) | 0.45 mm |
| Scanning time | from 450 ms |
| Dimensions | 416 x 68 x 86 mm |
| Baseline | 3500 mm |
| Weight | 950 g |
| Temperature working range | Full: 0 - 40 degrees Optimal: 22 - 25 degrees |
| Power | PoE or 24V |
| Data connection | 1 Gbit Ethernet |

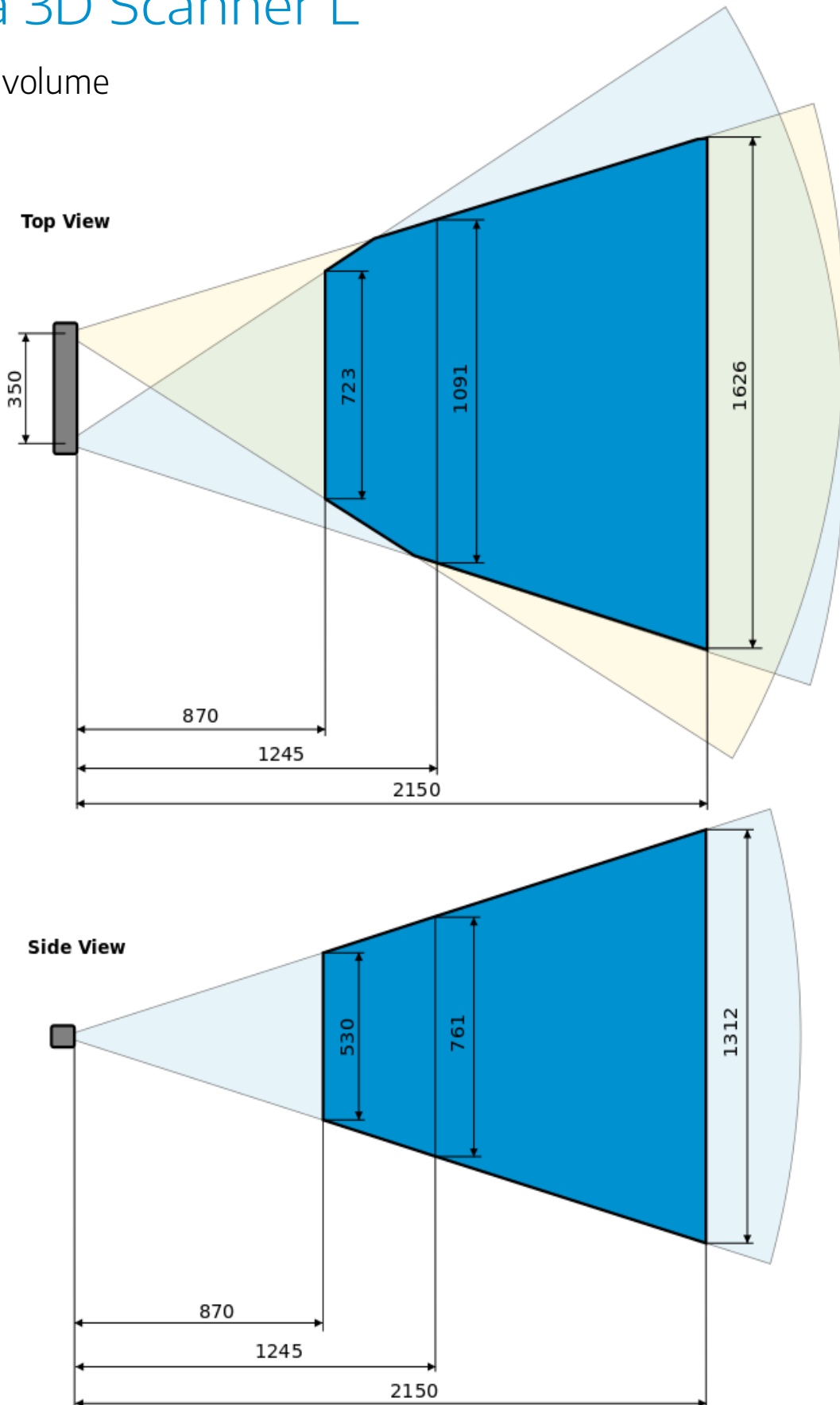
These parameters are valid at 22 °C - 25 °C at focus distance for white objects with 80% albedo.

For operation and installation instructions, please refer to the User Manual and CAD models available at: <https://photoneo.com/kb/device-resources>



Alpha 3D Scanner L

Scanning volume



Web: www.photoneo.com
 Business Inquiries: sales@photoneo.com
 Support: support@photoneo.com

Photoneo s.r.o.
 Plynárska 6
 82109 Bratislava,
 Slovakia